

To AS 2638.2, reduced weight and environmentally friendly
 Stem sealing exchangeable under pressure
 Socket ends to AS/NZS 2280 / AS 1477 Type 2 or AS 1477 Type 1

Use:

- For water, sewage and neutral liquid applications
 - Valve designed for use up to 70°C
 - Where applicable; for AS 4020 compliance, max temp = 40°C
- Note: Always observe pipe material recommended operating temperatures

Tests:

- Hydraulic test to AS 2638.2:
 - Seat: 17.6 bar
 - Body: 24 bar
 - Operating torque test

Optional Extras:

- Anchor legs for DN100 & DN150 only (ordered separately)
- Handwheel (refer to series 2570/58)
- ISO flange for gearbox/actuation (refer to series 2570/52)



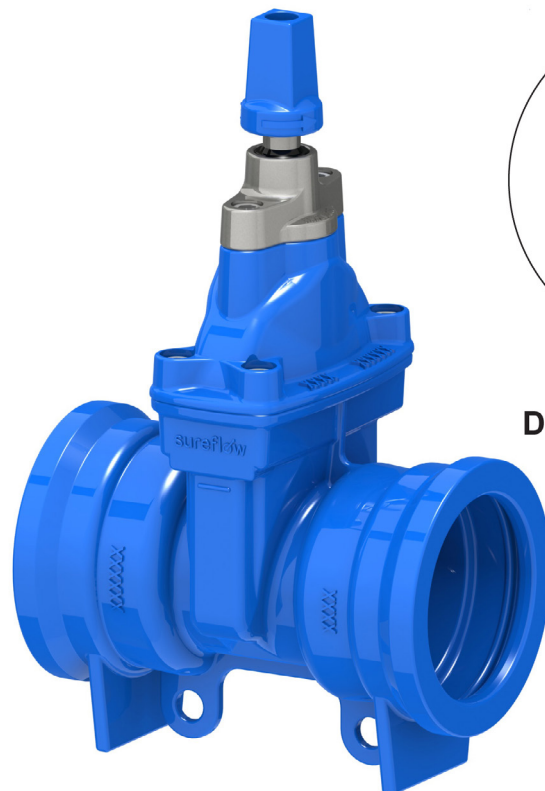
Quality
 ISO 9001
 SAI GLOBAL



Health & Safety
 AS 4801
 SAI GLOBAL



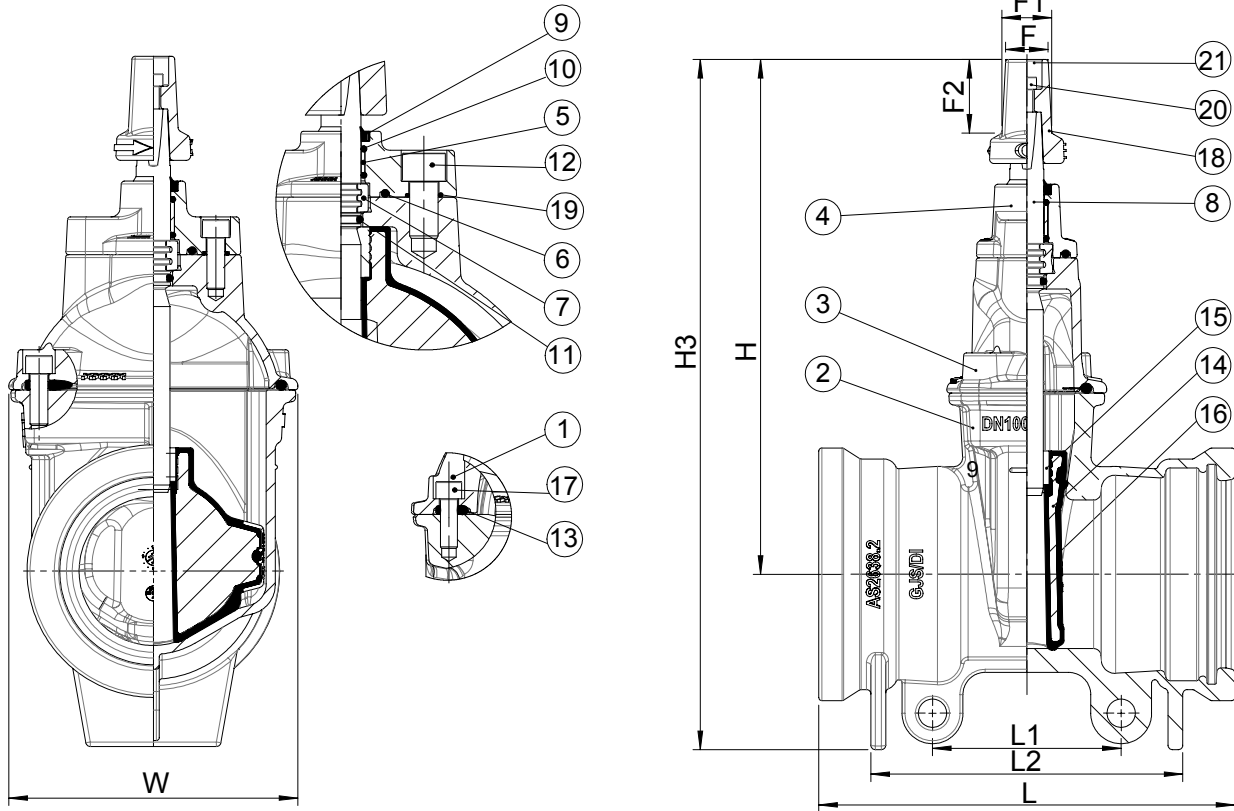
Environment
 ISO 14001
 SAI GLOBAL



**Anchor legs
 DN100 & DN150 only**



Australian
 Standard
 AS2638.2
 Lic. SMK02420
 SAI Global
 WaterMark



Component list

1. Hot melt seal		with hot melt glue
2. Body	Ductile Iron, 500-7 to AS 1831	
3. Bonnet	Ductile Iron, 500-7 to AS 1831	
4. Gland flange	Stainless Steel CF8M	
5. Bushing	Polyamide	
6. O-ring	NBR	
7. Thrust collar	Dezincification resistant brass, CZ 132 to AS 2345	
8. Stem	Stainless Steel 431	
9. Wiper ring	NBR	
10. O-ring	NBR	
11. O-ring	NBR	
12. Bolt socket	Stainless Steel 316, fully encapsulated	
13. Bonnet gasket	EPDM rubber	
14. Wedge	Ductile Iron, 500-7 to AS 1831	
15. Wedge nut	Dezincification resistant brass, CZ 132 to AS 2345	
16. Wedge rubber	EPDM	
17. Bolt socket	Stainless Steel 316, fully encapsulated with hot melt glue	
18. Stem cap	Ductile Iron, 500-7 to AS 1831, 35mm cap square	
19. O-ring	NBR	
20. Bolt socket	Stainless Steel 316	
21. Stem cap insert	Plastic	

Components can be substituted with equivalent or higher class materials.

Reference nos. and dimensions

Sureflow ref. nos. CC	Sureflow ref. nos. ACC	DN mm	Pipe D.ex. AS 2280/AS 1477 Type 2	Pipe D.ex. AS 1477 Type 1	L mm	L1 mm	L2 mm	W mm	H mm	H3 mm	F mm	F1 mm	F2 mm	Weight kg
			D (min-max) mm	D (min-max) mm										
2570-080-50-2940121	2570-080-50-3940121	80	94-97	-	252	-	132	174	324	393	30	35	50	14
2570-100-50-2940121	2570-100-50-3940121	100	120-123	-	280	126	210	195	347	465	30	35	50	18
2570-150-50-2940121	2570-150-50-3940121	150	175-178	-	304	126	213	275	429	574	30	35	50	31.5
2570-200-50-2940121	2570-200-50-3940121	200	230-233	-	396	-	206	335	563	707	29	35	57	53.5
2570-225-50-2940121	2570-225-50-3940121	225	257-260	-	450	-	250	422	643	801	29	35	57	84
2570-250-50-2940121	2570-250-50-3940121	250	284-287	-	466	-	256	422	656	828	29	35	57	88
2570-300-50-2940121	2570-300-50-3940121	300	343-346	-	488	-	278	452	739	942	29	35	57	118
2570-375-50-2940121	2570-375-50-3940121	375	424-428	-	560	-	292	564	917	1166	29	35	57	224
2570-080-50-2940122	2570-080-50-3940122	80	-	88.7-89.1	252	-	132	174	324	393	30	35	50	14
2570-100-50-2940122	2570-100-50-3940122	100	-	114-114.5	280	126	210	195	347	465	30	35	50	18
2570-150-50-2940122	2570-150-50-3940122	150	-	160-160.5	304	126	213	275	429	574	30	35	50	31.5
2570-200-50-2940122	2570-200-50-3940122	200	-	225-225.6	396	-	206	335	563	707	29	35	57	53.5
2570-225-50-2940122	2570-225-50-3940122	225	-	250-250.7	450	-	250	422	643	801	29	35	57	84
2570-250-50-2940122	2570-250-50-3940122	250	-	280-280.8	466	-	256	422	656	828	29	35	57	88
2570-300-50-2940122	2570-300-50-3940122	300	-	315-315.9	488	-	278	452	739	942	29	35	57	118
2570-375-50-2940122	2570-375-50-3940122	375	-	400-401	560	-	292	564	917	1166	29	35	57	224

To AS 2638.2, reduced weight and environmentally friendly
 Stem sealing exchangeable under pressure
 Socket to AS/NZS 2280 / AS 1477 Type 2 or AS 1477 Type 1
 Flange and drilling to AS 4087 Figure B5 (AS 2129 Table D and raised face)

Use:

- For water, sewage and neutral liquid applications
 - Valve designed for use up to 70°C
 - Where applicable; for AS 4020 compliance, max temp = 40°C
- Note: Always observe pipe material recommended operating temperatures

Tests:

- Hydraulic test to AS 2638.2:
 - Seat: 17.6 bar
 - Body: 24 bar
 - Operating torque test

Optional Extras:

- Handwheel (refer to series 2570/78)
- ISO flange for gearbox/actuation (refer to series 2570/72)



Quality
ISO 9001



Health & Safety
AS 4801



Environment
ISO 14001



DN100



DN150



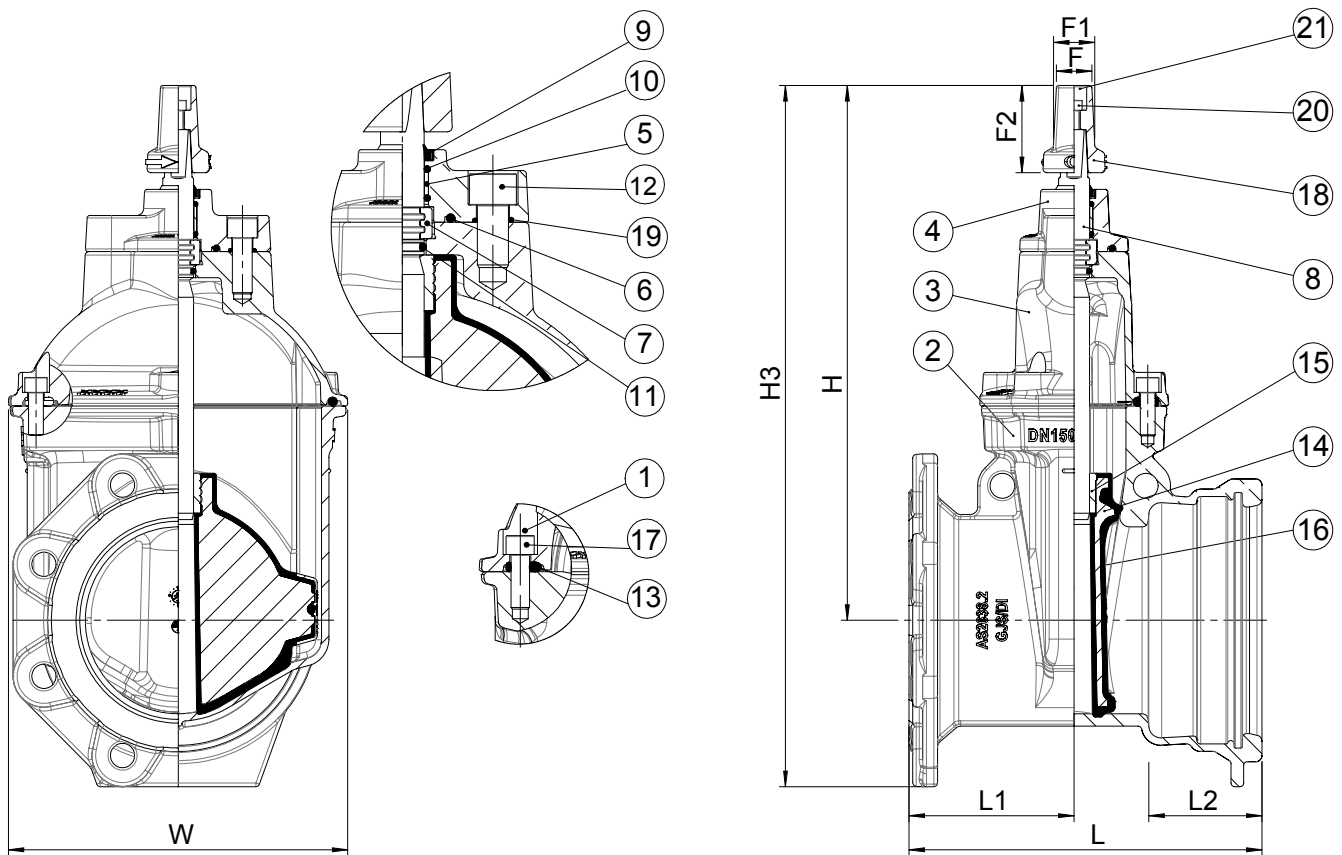
Australian
Standard

AS2638.2

Lic. SMK02420

SAI Global





Component list

1. Hot melt seal			with hot melt glue
2. Body	Ductile Iron, 500-7 to AS 1831	13. Bonnet gasket	EPDM rubber
3. Bonnet	Ductile Iron, 500-7 to AS 1831	14. Wedge	Ductile Iron, 500-7 to AS 1831
4. Gland flange	Stainless Steel CF8M	15. Wedge nut	Dezincification resistant brass, CZ 132 to AS 2345
5. Bushing	Polyamide	16. Wedge rubber	EPDM
6. O-ring	NBR	17. Bolt socket	Stainless Steel 316, fully encapsulated with hot melt glue
7. Thrust collar	Dezincification resistant brass, CZ 132 to AS 2345	18. Stem cap	Ductile Iron, 500-7 to AS 1831, 35mm cap square
8. Stem	Stainless Steel 431	19. O-ring	NBR
9. Wiper ring	NBR	20. Bolt socket	Stainless Steel 316
10. O-ring	NBR	21. Stem cap insert	Plastic
11. O-ring	NBR		
12. Bolt socket	Stainless Steel 316, fully encapsulated		

Components can be substituted with equivalent or higher class materials.

Reference nos. and dimensions

Sureflow ref. nos. CC	Sureflow ref. nos. ACC	DN mm	Pipe D.ex. AS 2280/AS 1477 Type 2	Pipe D.ex. AS 1477 Type 1	D2 mm	L mm	L1 mm	L2 mm	W mm	H mm	H3 mm	F mm	F1 mm	F2 mm	Flange OD mm	Bolt PCD mm	Hole Dia. mm	Weight kg
			D (min-max) mm	D (min-max) mm														
2570-080-70-2540121	2570-080-70-3540121	80	94-97	-	23	227.5	101.5	49	174	324	397	30	35	50	185	146	18	13
2570-100-70-2540121	2570-100-70-3540121	100	120-123	-	23	254.5	114.5	48	195	347	432	30	35	50	215	178	18	16
2570-150-70-2X40121	2570-150-70-3540121	150*	175-178	-	23	285.5	133.5	53	275	429	563	30	35	50	280	235	18	32
2570-080-70-2540122	2570-080-70-3540122	80	-	88.7-89.1	23	227.5	101.5	49	174	324	397	30	35	50	185	146	18	13
2570-100-70-2540122	2570-100-70-3540122	100	-	114-114.5	23	254.5	114.5	48	195	347	432	30	35	50	215	178	18	16
2570-150-70-2X40122	2570-150-70-3X40122	150*	-	160-160.5	23	285.5	133.5	53	275	429	563	30	35	50	280	235	18	32

*X: 5 = AS 4087 Figure B5
*X: 6 = AS 2129 Table E

To AS 2638.2, reduced weight and environmentally friendly
 Stem sealing exchangeable under pressure
 Face to face dimension to AS 2638.2
 Flange and drilling to AS 4087 Figure B5 (AS 2129 Table D and raised face) or AS 2129 Table E and raised face

Use:

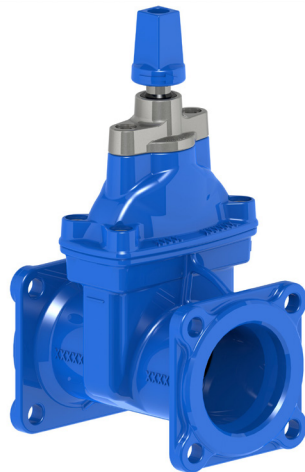
- For water, sewage and neutral liquid applications
 - Valve designed for use up to 70°C
 - Where applicable; for AS 4020 compliance, max temp = 40°C
- Note: Always observe pipe material recommended operating temperatures

Tests:

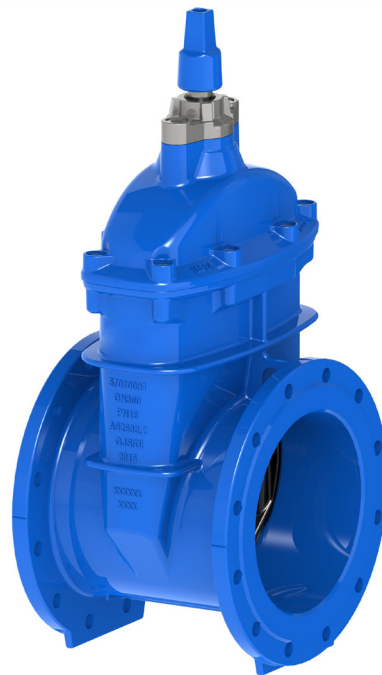
- Hydraulic test to AS 2638.2:
 - Seat: 17.6 bar
 - Body: 24 bar
 - Operating torque test

Optional Extras:

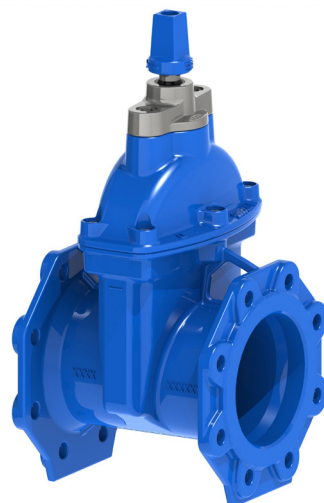
- Handwheel (refer to series 2570/98)
- ISO flange for gearbox/actuation (refer to series 2570/92)



DN80, 100



DN225, 250, 300, 375, 400



DN150, 200



Quality
ISO 9001



Health & Safety
AS 4801

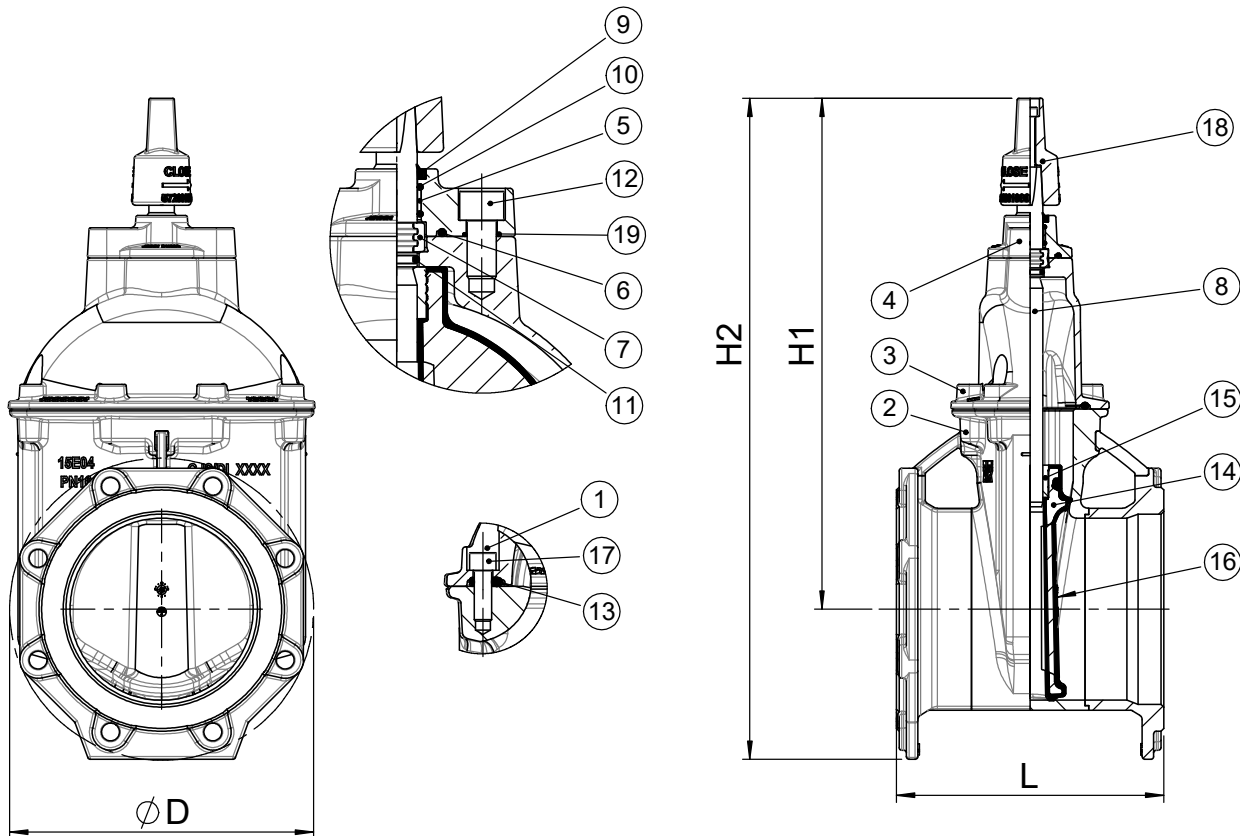


Environment
ISO 14001



Australian
Standard
AS2638.2
Lic. SMK02420
SAI Global





Component list

1. Hot melt seal		12. Bolt socket	Stainless Steel 316, fully encapsulated with hot melt glue
2. Body	Ductile Iron, 500-7 to AS 1831	13. Bonnet gasket	EPDM rubber
3. Bonnet	Ductile Iron, 500-7 to AS 1831	14. Wedge	Ductile Iron, 500-7 to AS 1831
4. Gland flange	Stainless Steel CF8M	15. Wedge nut	Dezincification resistant brass, CZ 132 to AS 2345
5. Bushing	Polyamid	16. Wedge rubber	EPDM
6. O-ring	NBR	17. Bolt socket	Stainless Steel 316, fully encapsulated with hot melt glue
7. Thrust collar	Dezincification resistant brass, CZ 132 to AS 2345	18. Stem cap	Ductile Iron, 500-7 to AS 1831, 35mm cap square
8. Stem	Stainless Steel 431	19. O-ring	NBR
9. Wiper ring	NBR		
10. O-ring	NBR		
11. O-ring	NBR		

Components can be substituted with equivalent or higher class materials.

Reference nos. and dimensions - Flange drilling to AS 4087 Figure B5 (AS 2129 Table D)

Sureflow ref. nos. CC	Sureflow ref. nos. ACC	DN mm	L mm	H1 mm	H2 mm	D mm	Hole OD mm	Holes nos.	Bolt PCD	Stem SQR	Weight kg
2570-080-902540120	2570-080-903540120	80	203	324	397	190	18	4	146	19	13
2570-100-902540120	2570-100-903540120	100	229	347	430	218	18	4	178	19	16
2570-150-902540120	2570-150-903540120	150	267	429	572	285	18	8	235	19	34
2570-200-902540120	2570-200-903540120	200	292	561	726	332	18	8	292	24	52
2570-225-902540120	2570-225-903540120	225	305	643	828	370	18	8	324	27	87
2570-250-902540120	2570-250-903540120	250	330	656	858	405	22	8	356	27	93
2570-300-902540120	2570-300-903540120	300	356	739	967	455	22	12	406	27	126
2570-375-902540120	2570-375-903540120	375	381	917	1192	550	26	12	495	32	227
2570-400-902540120	2570-400-903540120	400	406	930	1220	580	26	12	521	32	237

Reference nos. and dimensions - Flange drilling to AS 2129 Table E

Sureflow ref. nos. CC	Sureflow ref. nos. ACC	DN mm	L mm	H1 mm	H2 mm	D mm	Hole OD mm	Holes nos.	Bolt PCD	Stem SQR	Weight kg
2570-080-902540120	2570-080-903540120	80	203	324	397	190	18	4	146	19	13
2570-100-902640120	2570-100-903640120	100	229	347	430	218	18	8	178	19	18
2570-150-902640120	2570-150-903640120	150	267	429	572	285	22	8	235	19	34
2570-200-902640120	2570-200-903640120	200	292	561	726	332	22	8	292	24	52
2570-225-902640120	2570-225-903640120	225	305	643	828	370	22	12	324	27	87
2570-250-902640120	2570-250-903640120	250	330	656	858	405	22	12	356	27	93
2570-300-902640120	2570-300-903640120	300	356	739	967	455	26	12	406	27	126
2570-375-902540120	2570-375-903540120	375	381	917	1192	550	26	12	495	32	227
2570-400-902540120	2570-400-903540120	400	406	930	1220	580	26	12	521	32	237

SUREFLOW RESILIENT SEAT GATE VALVE PN16

2570/60

To AS 2638.2, reduced weight and environmentally friendly
Stem sealing exchangeable under pressure
Spigot ends to AS/NZS 2280 Figure J23

Use:

- For water, sewage and neutral liquid applications
 - Valve designed for use up to 70°C
 - Where applicable; for AS 4020 compliance, max temp = 40°C
- Note: Always observe pipe material recommended operating temperatures

Tests:

- Hydraulic test to AS 2638.2:
 - Seat: 17.6 bar
 - Body: 24 bar
 - Operating torque test

Optional Extras:

- Handwheel (refer to series 2570/68)
- ISO flange for gearbox/actuation (refer to series 2570/62)



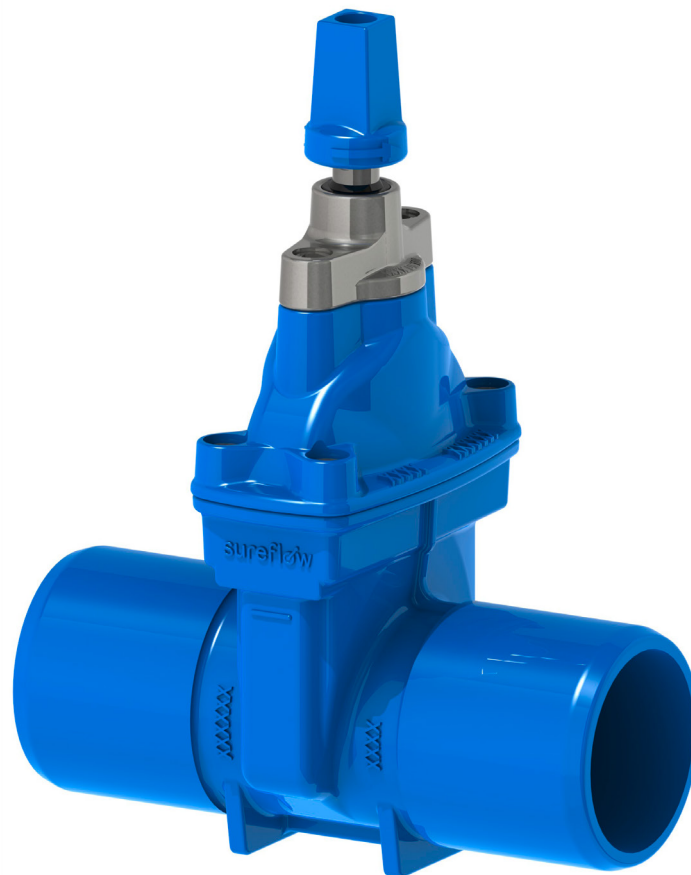
Quality
ISO 9001
SAI GLOBAL



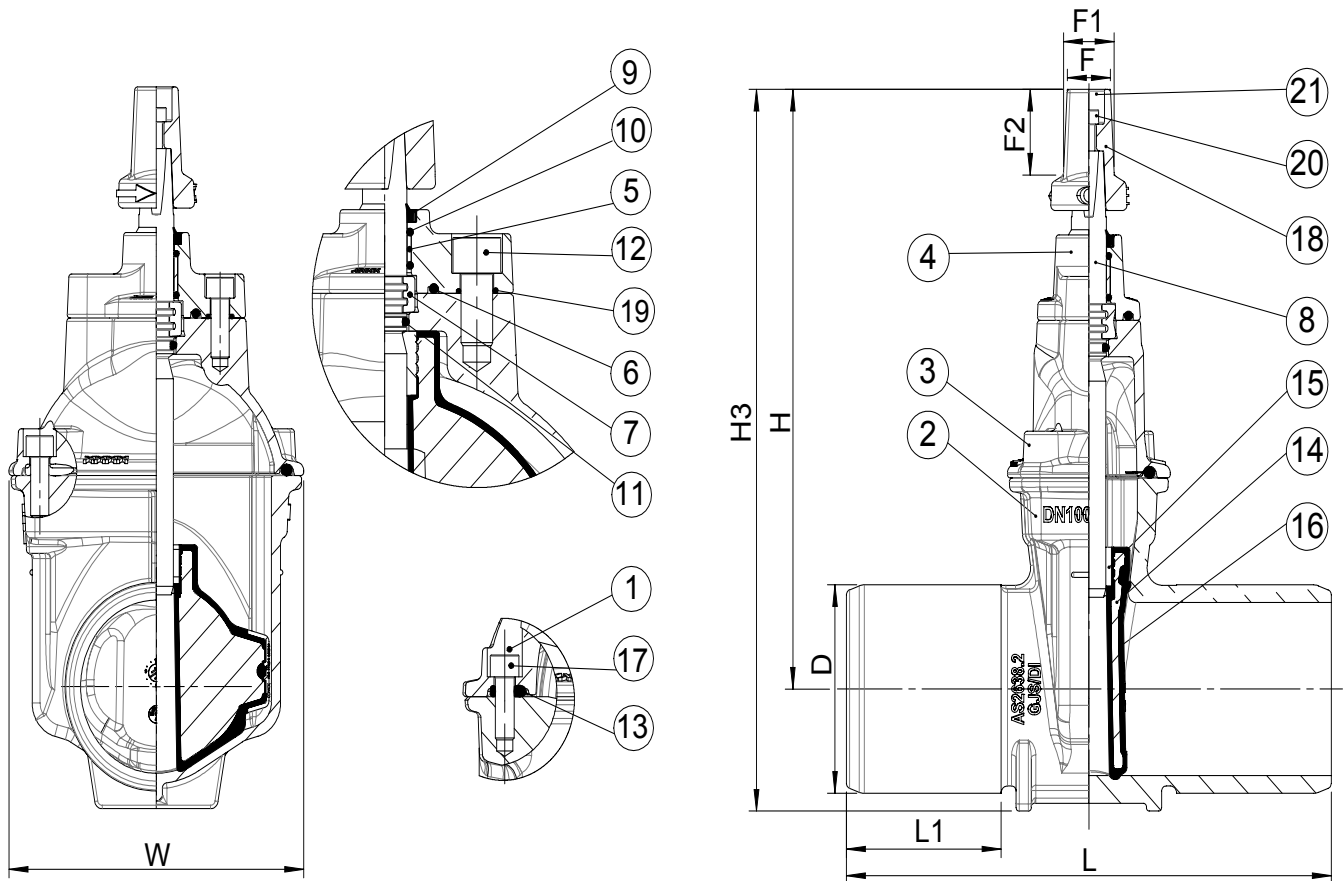
Health & Safety
AS 4801
SAI GLOBAL



Environment
ISO 14001
SAI GLOBAL



Australian
Standard
AS2638.2
Lic. SMK02420
SAI Global
WaterMark



Component list

1. Hot melt seal		13. Bonnet gasket	with hot melt glue EPDM rubber
2. Body	Ductile Iron, 500-7 to AS 1831	14. Wedge	Ductile Iron, 500-7 to AS 1831
3. Bonnet	Ductile Iron, 500-7 to AS 1831	15. Wedge nut	Dezincification resistant brass, CZ 132 to AS 2345
4. Gland flange	Stainless Steel CF8M	16. Wedge rubber	EPDM
5. Bushing	Polyamide	17. Bolt socket	Stainless Steel 316, fully encapsulated with hot melt glue
6. O-ring	NBR	18. Stem cap	Ductile Iron, 500-7 to AS 1831, 35mm cap square
7. Thrust collar	Dezincification resistant brass, CZ 132 to AS 2345	19. O-ring	NBR
8. Stem	Stainless Steel 431	20. Bolt socket	Stainless Steel 316
9. Wiper ring	NBR	21. Stem cap insert	Plastic
10. O-ring	NBR		
11. O-ring	NBR		
12. Bolt socket	Stainless Steel 316, fully encapsulated		

Components can be substituted with equivalent or higher class materials.

Reference nos. and dimensions

Sureflow ref. nos. CC	Sureflow ref. nos. ACC	DN mm	D mm	L mm	L1 mm	W mm	H mm	H3 mm	F mm	F1 mm	F2 mm	Weight kg
2570-080-60-2940120	2570-080-60-3940120	80	94.5	280	89	174.1	323.5	377.5	30	35	50	13
2570-100-60-2940120	2570-100-60-3940120	100	120.5	320	102	195	347	417	30	35	50	16
2570-150-60-2940120	2570-150-60-3940120	150	175.5	360	102	275	429	526	30	35	50	31
2570-200-60-2940120	2570-200-60-3940120	200	230.5	420	115	335	563	686	30	35	57	55
2570-225-60-2940120	2570-225-60-3940120	225	257.5	448	115	422	643.4	790.9	30	35	57	92
2570-250-60-2940120	2570-250-60-3940120	250	284.5	448	115	422	655.9	807.9	30	35	57	88
2570-300-60-2940120	2570-300-60-3940120	300	343.5	459.8	115	451.8	739.2	929.7	30	35	57	123