



HDPE CLAMPS

DN 40 - DN 600

STAINLESS STEEL CLAMPS PROVIDING FAST, EXPEDIENT ON-SITE REPAIR AND TAPPING SOLUTIONS FOR HDPE PIPE



FEATURES

- Manufactured from grade 316 stainless steel for superior corrosion protection
- Nitrile rubber gaskets provide a potable water contact approved seal
- Fully passivated stainless steel underscores the quality and longevity of the product
- Dry film anti-galling coating employed to minimise galling of the stainless steel fasteners
- Design features compensate for differential expansion and contraction of HDPE pipe with temperature variation
- Trench friendly mechanical application negates the need for tedious conventional electro fusion processes associated with repair and tapping HDPE pipe
- Rigid clamp body supports and augments the HDPE pipe in tapping applications
- Dispatched with detailed installation instructions
- Manufacturing facility certified to ISO 9001 quality assured standard

DESCRIPTION

WANG stainless steel HDPE clamps provide an alternative to conventional onsite HDPE repair and tapping methods, thereby negating the need for tedious electro fusion processes

HDPE Clamps are available for both repair and tapping applications with the availability of BSP threaded and AS 4087-PN 16 flanged offtakes as standard. Other thread and flange types are available upon request

APPLICATION

Mechanical application is fast and expedient requiring only pipe surface cleaning followed by pipe/clamp gasket lubrication (supplied) before clamp application and tensioning

Not recommended for HDPE pipe rated less than PN12.5

TECHNICAL DATA

Size Range: OD 110 - OD 600

Maximum Operating Pressure: 1600 kPa

Temperature Range: -10° to 60°C

Offtakes:

- Threaded BSP from 20mm to 100mm
- Flanged 80mm to 200mm in PN16 to AS 4087 with Table C,D compatible drilling (AS 2129)

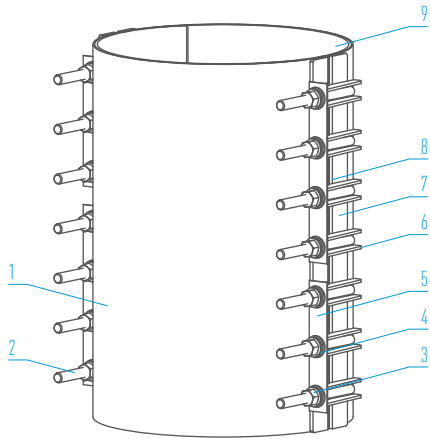
Note: Other offtake specifications are available upon request.

Available offtake DN size is limited to no more than 1/3 the parent pipe OD

HDPE CLAMPS

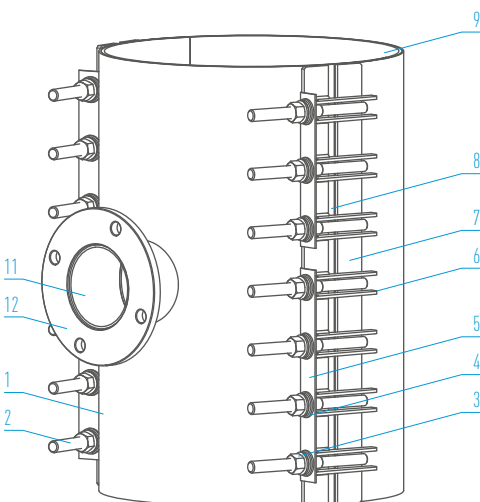
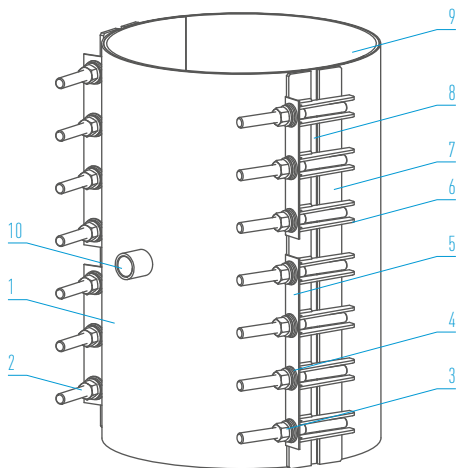
DN 40 - DN 600

STAINLESS STEEL CLAMPS PROVIDING FAST, EXPEDIENT ON-SITE REPAIR AND TAPPING SOLUTIONS FOR HDPE PIPE



PARTS LIST

No.	Description / Material / Standard
1	Skin 316 stainless steel / ASTM A240M
2	Studs 316 stainless steel / anti-galling compound coated / ASTM A276
3	Nuts 316 stainless steel / anti-galling compound coated / AS 1112.1
4	Belleville Washers 316 stainless steel / ASTM A240M
5	Locking Plate 316 stainless steel / ASTM A240M
6	Lugs 316 stainless steel ASTM A276 or A240M
7	Flat Bars 316 stainless steel ASTM A276 or A240M
8	Bridge Plate 316 stainless steel / bonded to gasket / ASTM A240M
9	Sealing Gasket Full-circle nitrile (NBR) compound AS 1646 and AS/NZS 4020
10	BSP Offtake 316 stainless steel ISO 4144 or ANSI B16.3, AS1722.1
11	Offtake Pipe 316 stainless steel ASTM A312M or ASME B36.19M
12	Flange Offtake 316 stainless steel ASTM A240M or A182, AS 4087



FLANGE OFFSET DIMENSION "A"

Flange Size. dn	Offset "A" mm
80 - 150	90
200 - 225	105



WANG CLAMPS & COUPLINGS

WANG is one of the leading manufacturers and suppliers of Grade 316 Stainless Steel Repair and Tapped Clamps as well as Couplings for reticulated water, sewerage and gas mains including industrial piping systems.

WANG products have become synonymous with quality and reliability. Our product range is widely utilised and relied upon by Water Authorities and Councils throughout Australia in the installation and maintenance of their supply mains and reticulation network.

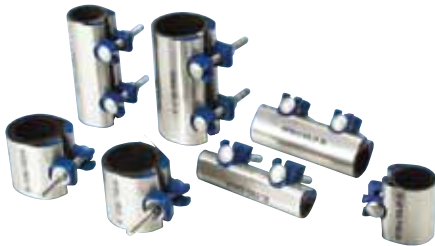


WANG products can be sourced through the Viadux national sales and service network of customer centres.

Viadux is a specialist in integrated solutions for all your water and wastewater pipeline system requirements.

KWIK CLAMPS

A full circle repair clamp for small bore galvanised steel, copper and PVC pipe. DN 15 - DN 50



REPAIR CLAMPS

A fast, permanent and economical repair solution for most pipe types and sizes. DN 50 - DN 1200



TAPPED CLAMPS

A reliable means of tapping into old, unstable or damaged pipe. DN 50 - DN 1200



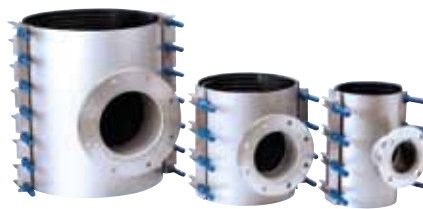
TAPPING SADDLES

Permanent tapping solution for both rigid and flexible pipe. DN 40 - DN 450



FLANGED OFFTAKE CLAMPS

A cost effective means of achieving a "T" connection or under pressure tapping. DN 100 - DN 900



SEWER OB JUNCTION CLAMPS

A quick method of installing a new property service connection on a sewer main. DN 100 - DN 450



VARI-FLANGED COUPLINGS

Enable connection between a stub ended pipe and a mating flanged face. DN 80 - DN 600



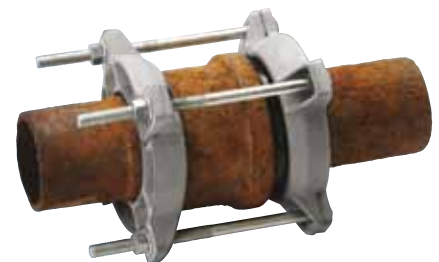
HIGH PRESSURE COUPLINGS

Provides a mechanical joint between similar or dissimilar pipes in high pressure environments. DN 150 - DN 2000



SOCKET JOINT LEAK CLAMPS

Provide a permanent and economical seal over a leaking socket-spigot joint. DN 80 - DN 1200



DISTRIBUTED BY VIADUX

ADELAIDE
P: 08 8340 3411
F: 08 8340 3422
E: ccasales@viadux.com.au

BRISBANE
P: 07 5589 4400
F: 07 5534 7079
E: ccbsales@viadux.com.au

DARWIN
P: 08 8935 3300
F: 08 8947 3981
E: ccdsales@viadux.com.au

GOLD COAST
P: 07 5589 4400
F: 07 5534 7079
E: ccgsales@viadux.com.au

MELBOURNE
P: 03 9309 9133
F: 03 9309 6237
E: ccmsales@viadux.com.au

PERTH
P: 08 9346 8500
F: 08 9346 8501
E: ccpsales@viadux.com.au

SYDNEY
P: 02 9794 3440
F: 02 9794 3499
E: ccssales@viadux.com.au

TOWNSVILLE
P: 07 4725 5940
F: 07 4725 4995
E: cctsales@viadux.com.au

WANG COMPONENTS

CNR GIBSON STREET & SANDFORD ROAD, WANGARATTA, VICTORIA 3677
PHONE 03 5722 7400 / FAX 03 5722 7444

All WANG trademarks and logos are owned by Wang Components. All other brand or product names are trademarks or registered marks of their respective owners. Because we are continuously improving our products and services, Wang Components reserves the right to change specifications without prior notice.
AP0315 © 2015 Wang Components. All Rights Reserved.

