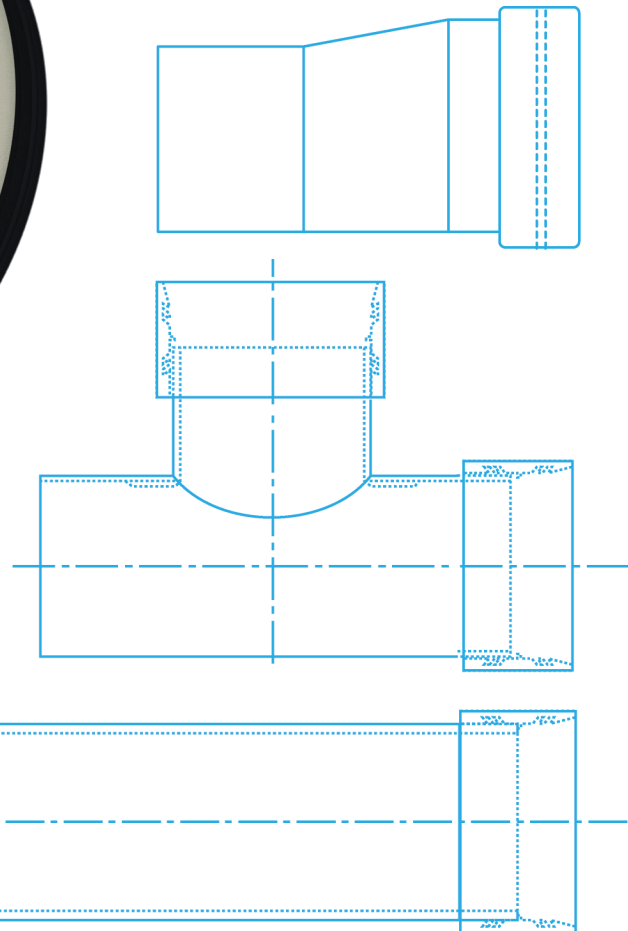
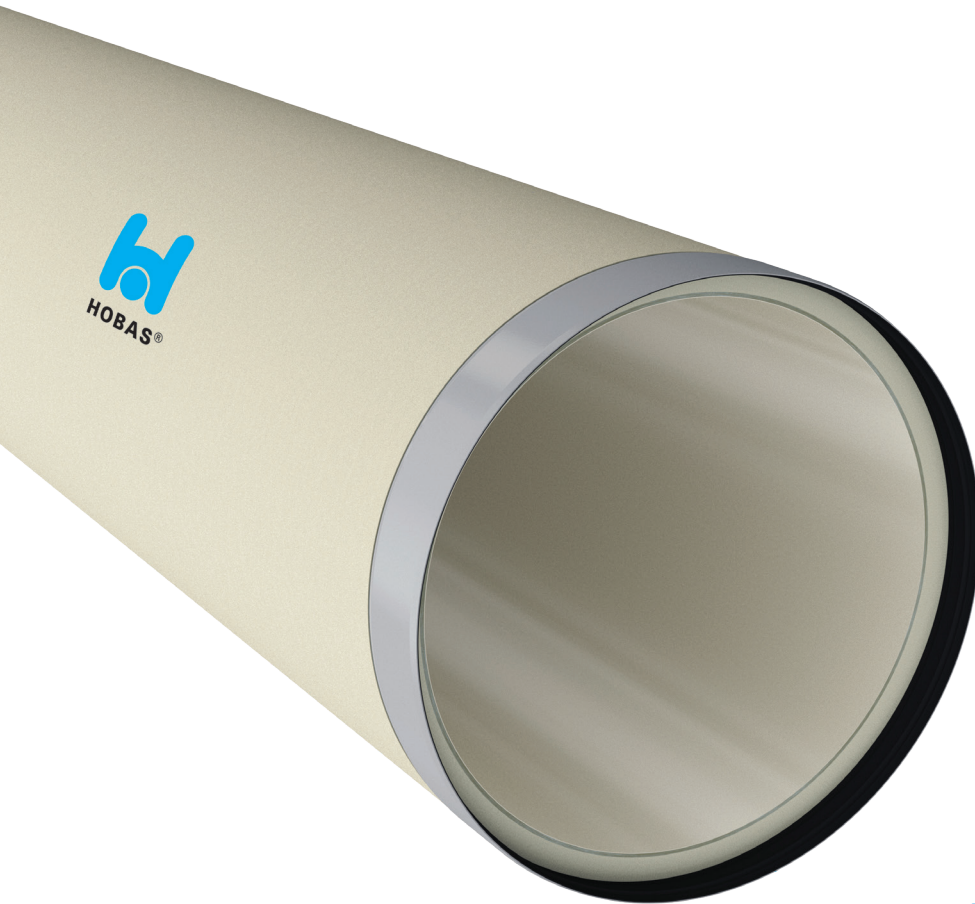


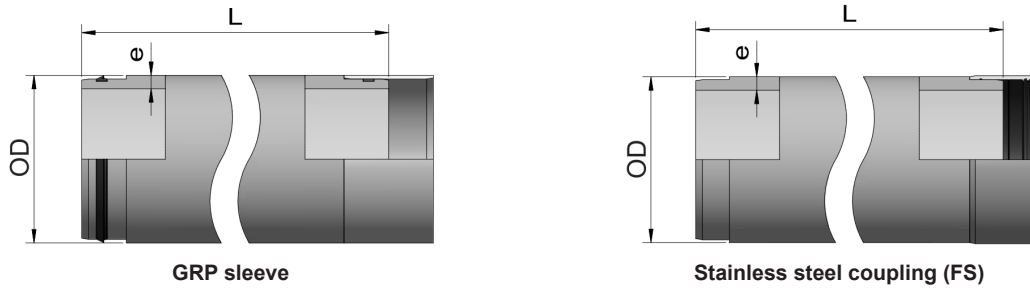


Hobas GRP jacking pipes PN1

Technical product data



Jacking pipes OD 272-550



Production range of Hobas jacking pipes with flush GRP sleeve or stainless steel coupling (FS). Wall thicknesses of the individual pipe diameters can be produced within this range. In compliance with the required jacking forces, the optimal pipe can be supplied this way. Please contact Amiblu for all relevant technical details.

The standard pipe length is 6 m. Shorter lengths are available on request.

OD [mm]		e [mm]	Stainless steel coupling (FS)	GRP sleeve	m [kg/m]	SN [N/m ²]
			F_{max}^* [kN]	F_{max}^* [kN]		
272	min	19	204	-	32	320000
	max	24	297	-	40	640000
324	min	20	273	-	40	200000
	max	28	452	-	55	640000
376	min	19	297	-	45	128000
	max	32	638	-	73	640000
427	min	19	342	-	51	100000
		34	795	696	89	640000
	max	39	938	839	101	1000000
478	min	21	449	-	64	80000
		41	1120	1015	120	640000
	max	46	1278	1173	133	1000000
530	min	20	459	-	68	64000
		36	1071	957	118	320000
	max	51	1608	1492	163	1000000
550	min	20	484	-	70	40000
		33	1006	893	113	200000
	max	53	1755	1640	176	1000000

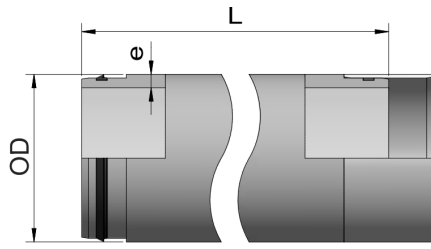
* The allowable jacking force F_{max} [kN] corresponds to a safety factor of 3.5 times the ultimate force according to ISO 25780. Project-related static calculations can result in differing allowable jacking forces.

Wall thicknesses and masses are guidelines (plus tolerances).

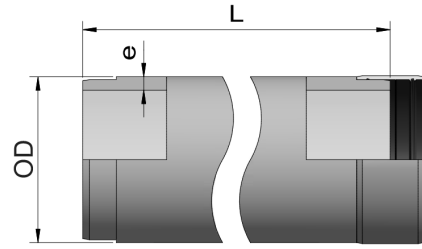
Portfolio as sold by Amiblu. For the full range of Hobas technology, visit www.hobas.com.

© Amiblu Holding GmbH. Figures may slightly vary due to manufacturing tolerances. Amiblu does not accept any liability for errors, omissions, and subsequent changes to technical data.

Jacking pipes OD 616-960



GRP sleeve



Stainless steel coupling (FS)

Production range of Hobas jacking pipes with flush GRP sleeve or stainless steel coupling (FS). Wall thicknesses of the individual pipe diameters can be produced within this range. In compliance with the required jacking forces, the optimal pipe can be supplied this way. Please contact Amiblu for all relevant technical details.

The standard pipe length is 6 m. Shorter lengths are available on request.

OD [mm]		e [mm]	Stainless steel coupling (FS)	GRP sleeve	m [kg/m]	SN [N/m ²]
			F _{max} * [kN]	F _{max} * [kN]		
616	min	21	583	-	82	40000
		34	1172	1040	132	160000
	max	58	2188	2055	216	1000000
650	min	21	613	-	87	32000
		33	1191	1055	135	128000
	max	62	2491	2352	244	1000000
718	min	23	733	-	105	32000
		32	1215	1121	146	100000
	max	68	3012	2915	295	1000000
752	min	24	800	-	115	32000
		33	1305	1231	158	80000
	max	72	3342	3263	327	1000000
820	min	25	964	-	132	32000
		33	1456	1229	172	64000
	max	78	4033	3802	387	1000000
860	min	27	1140	-	149	32000
		35	1655	1407	192	64000
	max	80	4362	4110	417	1000000
924	min	29	1302	-	172	32000
		34	1649	1448	201	50000
	max	77	4470	4265	436	640000
960	min	31	1497	1262	191	32000
	max	80	4854	4615	471	640000

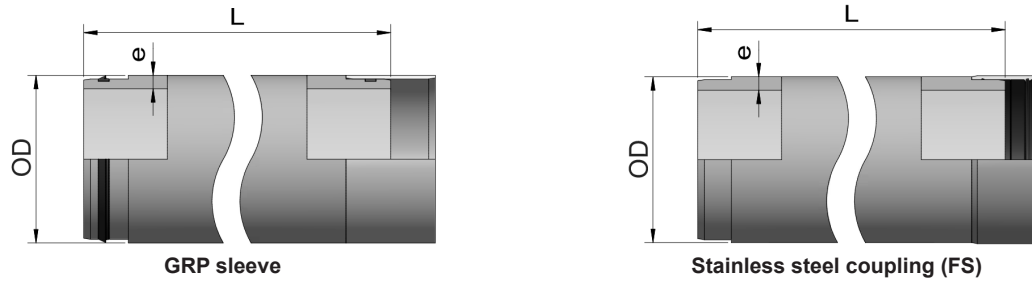
* The allowable jacking force F_{max} [kN] corresponds to a safety factor of 3.5 times the ultimate force according to ISO 25780. Project-related static calculations can result in differing allowable jacking forces.

Wall thicknesses and masses are guidelines (plus tolerances).

Portfolio as sold by Amiblu. For the full range of Hobas technology, visit www.hobas.com.

© Amiblu Holding GmbH. Figures may slightly vary due to manufacturing tolerances. Amiblu does not accept any liability for errors, omissions, and subsequent changes to technical data.

Jacking pipes OD 1026-1842



Production range of Hobas jacking pipes with flush GRP sleeve or stainless steel coupling (FS). Wall thicknesses of the individual pipe diameters can be produced within this range. In compliance with the required jacking forces, the optimal pipe can be supplied this way. Please contact Amiblu for all relevant technical details.

The standard pipe length is 6 m. Shorter lengths are available on request.

OD [mm]		e [mm]	Stainless steel coupling (FS)	GRP sleeve	m [kg/m]	SN [N/m ²]
			F _{max} * [kN]	F _{max} * [kN]		
1026	min	34	1830	1585	223	32000
	max	68	4366	4118	435	320000
1099	min	35	2040	1717	246	32000
	max	73	5079	4752	500	320000
1229	min	40	2748	2289	315	32000
	max	81	6415	5951	621	320000
1280	min	41	2968	2434	336	32000
	max	68	5520	4983	549	160000
1434	min	46	3890	3150	423	32000
	max	76	7076	6323	688	160000
1499	min	48	4236	3476	462	32000
	max	79	7669	6904	748	160000
1535	min	48	3687	3548	474	32000
	max	75	6771	6627	732	128000
1638	min	52	4456	4218	548	32000
	max	81	7976	7734	844	128000
1720	min	55	5056	4381	609	32000
	max	78	8009	7322	856	100000
1842	min	59	6001	5224	700	32000
	max	83	9295	8513	976	100000

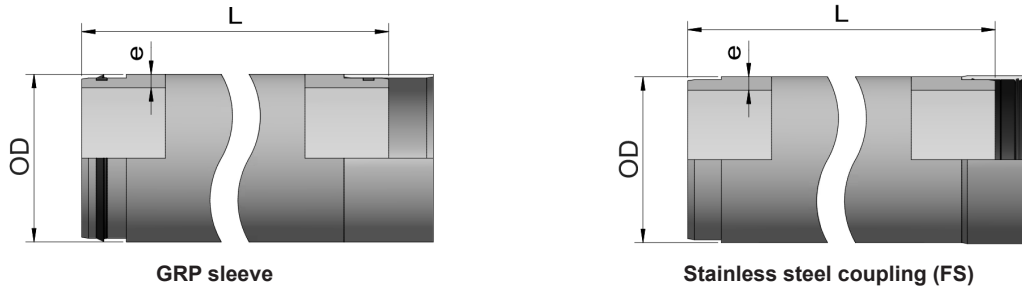
* The allowable jacking force F_{max} [kN] corresponds to a safety factor of 3.5 times the ultimate force according to ISO 25780. Project-related static calculations can result in differing allowable jacking forces.

Wall thicknesses and masses are guidelines (plus tolerances).

Portfolio as sold by Amiblu. For the full range of Hobas technology, visit www.hobas.com.

© Amiblu Holding GmbH. Figures may slightly vary due to manufacturing tolerances. Amiblu does not accept any liability for errors, omissions, and subsequent changes to technical data.

Jacking pipes OD 1937-3600



Production range of Hobas jacking pipes with flush GRP sleeve or stainless steel coupling (FS). Wall thicknesses of the individual pipe diameters can be produced within this range. In compliance with the required jacking forces, the optimal pipe can be supplied this way. Please contact Amiblu for all relevant technical details.

The standard pipe length is 6 m. Shorter lengths are available on request.

OD [mm]		e [mm]	Stainless steel coupling (FS)	GRP sleeve	m [kg/m]	SN [N/m ²]
			F _{max} * [kN]	F _{max} * [kN]		
1937	min	62	6747	5325	774	32000
	max	81	9501	8078	1005	80000
2047	min	65	7601	6549	857	32000
	max	85	10662	9606	1115	80000
2160	min	69	8828	7185	962	32000
	max	90	12216	10573	1246	80000
2250	min	71	9422	7987	1030	32000
	max	94	13292	11852	1355	80000
2400	min	76	-	9251	1177	32000
	max	100	-	13548	1538	80000
2453	min	80	-	10127	1266	32000
	max	102	-	14157	1604	80000
2555	min	82	-	10846	1352	32000
	max	106	-	15425	1747	80000
2999	min	94	-	13548	1818	32000
	max	127	-	20947	2443	80000
3270	min	101	-	15535	2132	32000
	max	126	-	21676	2650	645000
3600	min	111	-	19774	2583	32000
	max	138	-	27080	3199	64000

* The allowable jacking force F_{max} [kN] corresponds to a safety factor of 3.5 times the ultimate force according to ISO 25780. Project-related static calculations can result in differing allowable jacking forces.

Wall thicknesses and masses are guidelines (plus tolerances).

Portfolio as sold by Amiblu. For the full range of Hobas technology, visit www.hobas.com.

© Amiblu Holding GmbH. Figures may slightly vary due to manufacturing tolerances. Amiblu does not accept any liability for errors, omissions, and subsequent changes to technical data.

Notes

A large rectangular area filled with a light blue dotted grid, intended for taking notes.

Portfolio as sold by Amiblu. For the full range of Hobas technology, visit www.hobas.com.
© Amiblu Holding GmbH. Figures may slightly vary due to manufacturing tolerances. Amiblu does not accept any liability for errors, omissions, and subsequent changes to technical data.

Why there is nothing else like an Amiblu pipe system



Engineered for the next 150 years



Service-focused partners to solve your problems



Innovation to challenge the status quo



Amiblu®

Explore more on amiblu.com or contact your local partner for sustainable GRP pipe solutions.

All rights reserved. No part of this document may be reproduced in any form or by any means without prior written permission. All data, especially technical data, is subject to subsequent modifications. The data given is not binding and must therefore be checked in each individual case and revised as appropriate.
© Amiblu Holding GmbH, Publication: 06/2017 | Rev. 1



Amiblu Pipe Systems
Engineered for the next 150 years