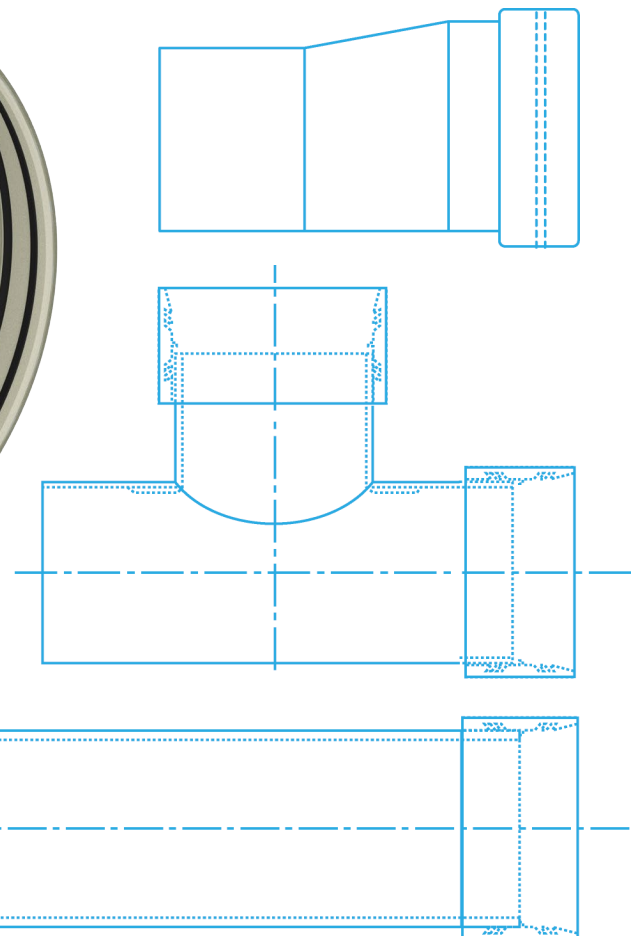
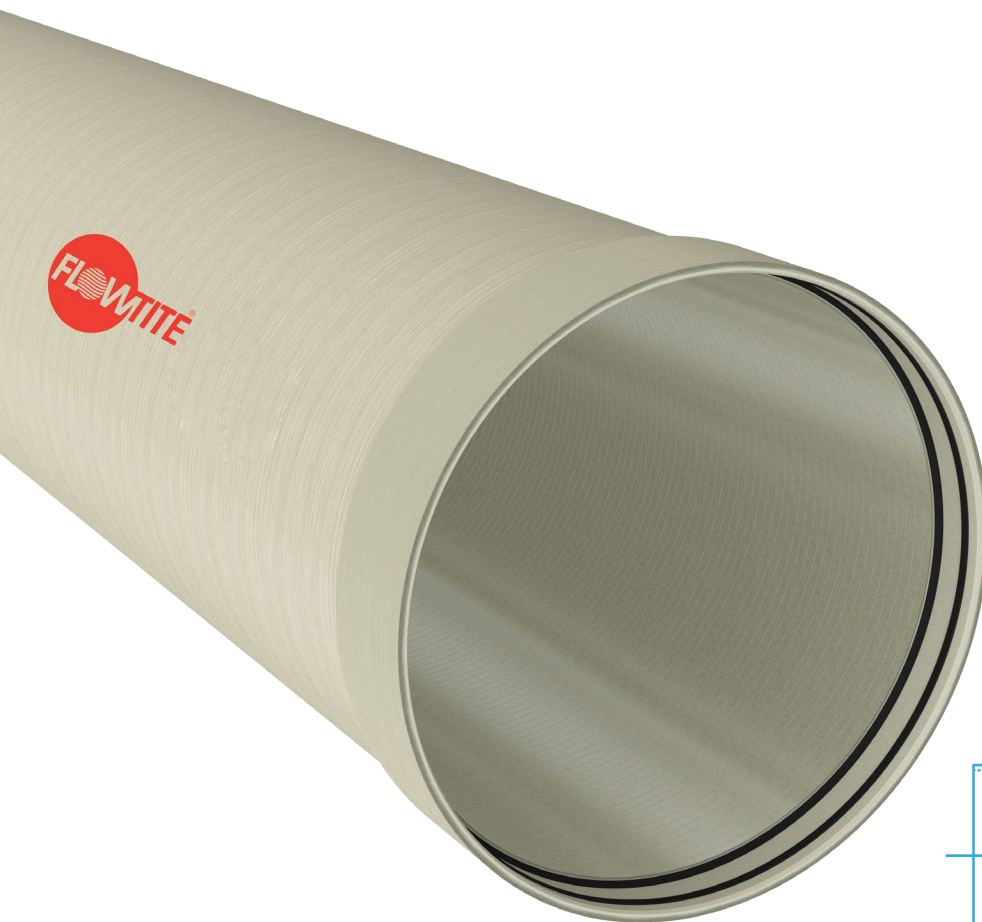




# Flowtite GRP Jacking Pipe

Technical product data





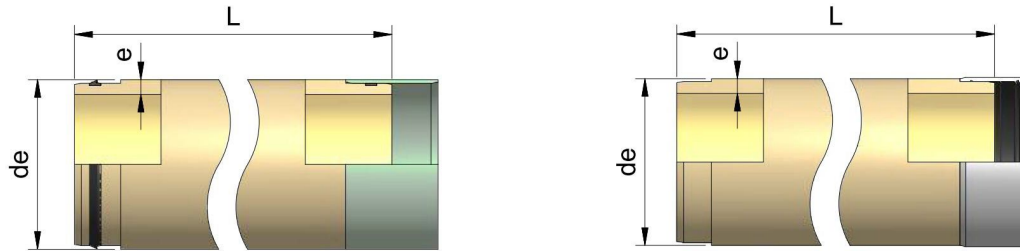
# Contents

<b>Page</b>	
4	Abbreviations
5	Jacking Pipe OD 345-501
6	Jacking Pipe OD 530-752
7	Jacking Pipe OD 820-1099
8	Jacking Pipe OD 1229-1535
9	Jacking Pipe OD 1638-2160
10	Jacking Pipe OD 2250-3600
11	Joints and Couplings
12	Notes

# Abbreviations

$\alpha$	Angle	DN	Nominal diameter
B1	$d_e$ to product standard (EN 1796/EN 14364)	$DN_B$	Nominal diameter branch
B2	$d_e$ to GRP and casting standards	$DN_H$	Nominal diameter header
B3	$d_e$ to GRP and PVC standards	$DN_L$	Nominal diameter large
B4	$d_e$ to GRP and steel standards	$DN_S$	Nominal diameter small
BE	Branch eccentricity	DS	Diameter series
BL	Branch length / Bend length	e	Wall thickness
BLL	Branch laying length	HLL	Header laying length
BP	Branch position	LL	Laying length
$d_e$	External diameter	LN	Nominal length
$d_{eB}$	External diameter branch	m	Weight
$d_{eH}$	External diameter header	PN	Nominal pressure
$d_{eL}$	External diameter large	R	Radius
$d_{eS}$	External diameter small	SN	Nominal stiffness

# Jacking Pipes OD 345 - 501



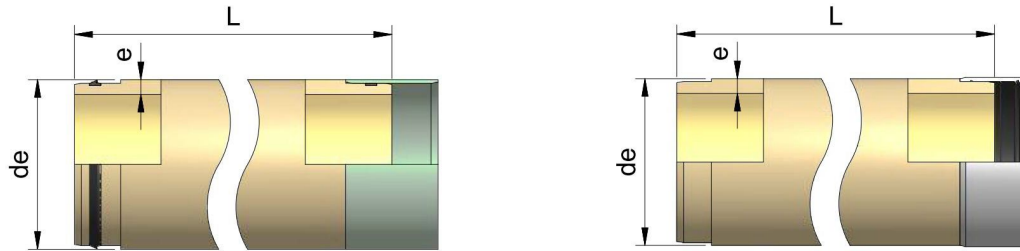
Jacking pipes with flush coupling (GRP or stainless steel), including allowable jacking forces. The standard pipe length is 6 m. Lengths of 1 / 2 / 3 m are available on request.

OD [mm]		SN	SN	SN	SN	SN	SN	SN	SN	SN	SN	SN	SN	
Coupling		32000	40000	50000	64000	80000	100000	128000	160000	200000	320000	640000	1000000	
<b>345</b>	e [mm]										20	23	28	
	m [kg/m]										42	48	57	
	stainless steel F [kN]*										273	341	452	
<b>376</b>	e [mm]							19	20	23	27	32		
	m [kg/m]							47	49	56	65	76		
	stainless steel F [kN]*							297	324	405	424	638		
<b>401</b>	e [mm]						19	20	21	24	28	34	39	
	m [kg/m]						50	53	55	62	72	86	97	
	stainless steel F [kN]						315	344	373	459	572	736	868	
GRP	F [kN]*											647	779	
<b>427</b>	e [mm]							19	20	21	24	28	34	43
	m [kg/m]							54	56	59	67	77	92	114
	stainless steel F [kN]*							342	373	405	497	618	795	1049
GRP	F [kN]*											696	950	
<b>478</b>	e [mm]					21	23	25	27	29	33	41	46	
	m [kg/m]					66	72	78	84	90	101	124	137	
	stainless steel F [kN]*					449	519	588	657	725	859	1120	1278	
GRP	F [kN]*											1015	1173	
<b>501</b>	e [mm]				20	22	24	26	28	30	35	43	48	
	m [kg/m]				66	73	79	85	91	98	113	136	150	
	stainless steel F [kN]*				434	509	582	655	727	798	974	1247	1412	
GRP	F [kN]*											864	1137	1302

Wall thicknesses and pipe masses are minimum values or guidelines (plus tolerances).

\* The allowable jacking force (kN) corresponds to a safety factor of 3.5 times the ultimate force calculated. Project-related static calculations can result in differing allowable jacking forces.

# Jacking Pipes OD 530 - 752



Jacking pipes with flush coupling (GRP or stainless steel), including allowable jacking forces. The standard pipe length is 6 m. Lengths of 1 / 2 / 3 m are available on request.

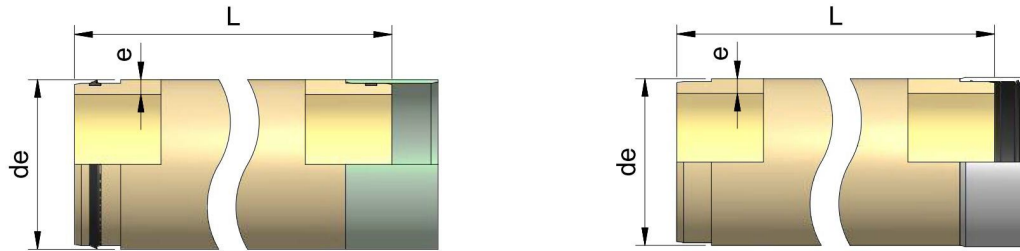
OD [mm]	Coupling	SN											
		32000	40000	50000	64000	80000	100000	128000	160000	200000	320000	640000	1000000
530	e [mm]				20	23	24	26	28	31	36	44	51
	m [kg/m]				70	81	84	90	97	107	123	148	169
	stainless steel F [kN]*				459	577	616	694	770	885	1071	1362	1608
	GRP F [kN]*										957	1247	1492
550	e [mm]		20	21	22	24	26	28	30	33	38	47	53
	m [kg/m]		73	75	80	87	94	101	108	118	134	163	182
	stainless steel F [kN]*		484	505	566	648	728	808	888	1006	1199	1537	1755
	GRP F [kN]*									893	1086	1423	1640
616	e [mm]		21	23	25	27	29	32	34	37	43	50	58
	m [kg/m]		86	94	102	110	118	129	137	148	170	196	224
	stainless steel F [kN]*		583	675	767	858	949	1083	1172	1304	1564	1860	2188
	GRP F [kN]*								1040	1172	1432	1727	2055
650	e [mm]	21	24	25	26	28	30	33	35	38	44	54	62
	m [kg/m]	91	104	108	112	120	128	141	149	161	184	222	252
	stainless steel F [kN]*	613	760	809	857	953	1049	1191	1285	1425	1700	2146	2491
	GRP F [kN]*							1055	1148	1288	1563	2008	2352
718	e [mm]	23	25	27	28	30	32	35	40	43	48	59	68
	m [kg/m]	110	120	129	134	143	152	165	187	201	222	269	305
	stainless steel F [kN]*	733	842	949	1003	1109	1215	1373	1633	1787	2040	2583	3012
	GRP F [kN]*						1121	1278	1538	1691	1944	2486	2915
752	e [mm]	24	26	28	30	33	36	39	42	45	51	62	72
	m [kg/m]	121	130	140	150	164	178	192	206	220	247	296	338
	stainless steel F [kN]*	800	913	1026	1138	1305	1470	1634	1797	1958	2276	2843	3342
	GRP F [kN]*					1231	1396	1560	1722	1882	2199	2765	3263

Wall thicknesses and pipe masses are minimum values or guidelines (plus tolerances).

\* The allowable jacking force (kN) corresponds to a safety factor of 3.5 times the ultimate force calculated. Project-related static calculations can result in differing allowable jacking forces.

All figures quoted are values and may vary slightly from the finished product due to manufacturing tolerances. The information and recommendations reflect the state of knowledge at the time of publication. They cannot therefore be construed as an express or implied warranty. The details must be checked and, if necessary, agreed in each individual case. HOBAS cannot accept any liability. This also applies to errors, omissions and changes to technical data without notice.

# Jacking Pipes OD 820 - 1099



Jacking pipes with flush coupling (GRP or stainless steel), including allowable jacking forces. The standard pipe length is 6 m. Lengths of 1 / 2 / 3 m are available on request.

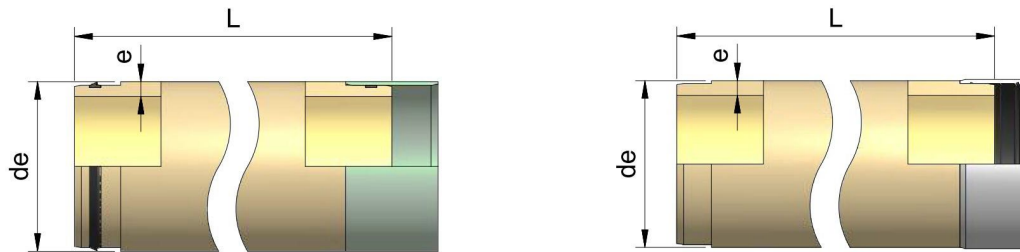
OD [mm]	Coupling	SN	SN	SN	SN	SN	SN	SN	SN	SN	SN	SN	SN
		32000	40000	50000	64000	80000	100000	128000	160000	200000	320000	640000	1000000
820	e [mm]	25	27	29	33	35	38	42	45	49	54	67	78
	m [kg/m]	137	148	158	179	190	205	226	241	261	286	349	400
	stainless steel F [kN]*	964	1088	1211	1456	1578	1758	1998	2175	2410	2699	3433	4033
	GRP F [kN]*				1229	1351	1531	1770	1947	2181	2471	3203	3802
860	e [mm]	27	29	31	35	37	40	43	47	51	58	72	
	m [kg/m]	155	166	178	199	210	227	243	264	285	321	392	
	stainless steel F [kN]*	1140	1270	1399	1655	1783	1972	2160	2409	2655	3080	3905	
	GRP F [kN]*				1407	1534	1724	1911	2160	2406	2830	3654	
924	e [mm]	29	32	34	37	40	42	46	50	54	62	77	
	m [kg/m]	179	197	209	227	244	256	279	302	324	369	450	
	stainless steel F [kN]*	1302	1511	1649	1856	2061	2197	2466	2734	2998	3520	4470	
	GRP F [kN]*			1448	1654	1859	1995	2264	2531	2796	3316	4265	
960	e [mm]	31	34	36	39	42	44	48	52	56	64	80	
	m [kg/m]	199	217	230	244	266	278	302	326	350	396	486	
	stainless steel F [kN]*	1497	1714	1857	2072	2284	2425	2706	2983	3258	3801	4854	
	GRP F [kN]*		1478	1621	1836	2048	2189	2469	2746	3021	3563	4615	
1026	e [mm]	34	36	38	41	44	48	52	56	61	68		
	m [kg/m]	233	246	259	279	298	324	350	375	407	450		
	stainless steel F [kN]*	1830	1984	2138	2367	2595	2897	3196	3492	3859	4366		
	GRP F [kN]*	1585	1739	1893	2122	2350	2651	2950	3246	3612	4118		
1099	e [mm]	35	38	41	44	48	51	56	59	64	73		
	m [kg/m]	257	278	300	321	348	369	403	424	457	517		
	stainless steel F [kN]*	2040	2288	2535	2781	3106	3348	3748	3987	4380	5079		
	GRP F [kN]*	1717	1965	2212	2457	2781	3023	3423	3661	4054	4752		

Wall thicknesses and pipe masses are minimum values or guidelines (plus tolerances).

\* The allowable jacking force (kN) corresponds to a safety factor of 3.5 times the ultimate force calculated. Project-related static calculations can result in differing allowable jacking forces.

All figures quoted are values and may vary slightly from the finished product due to manufacturing tolerances. The information and recommendations reflect the state of knowledge at the time of publication. They cannot therefore be construed as an express or implied warranty. The details must be checked and, if necessary, agreed in each individual case. Amiblu cannot accept any liability. This also applies to errors, omissions and changes to technical data without notice.

# Jacking Pipes OD 1299 - 1535



Jacking pipes with flush coupling (GRP or stainless steel), including allowable jacking forces. The standard pipe length is 6 m. Lengths of 1 / 2 / 3 m are available on request.

OD [mm]	Coupling	SN	SN	SN	SN	SN	SN	SN	SN	SN	SN	SN	SN
		32000	40000	50000	64000	80000	100000	128000	160000	200000	320000	640000	1000000
1229	e [mm]	40	43	46	49	53	56	61	66	71	81		
	m [kg/m]	328	352	376	399	430	454	492	530	568	642		
	stainless steel F [kN]*	2748	3026	3302	3576	3940	4212	4660	5105	5546	6415		
	GRP F [kN]*	2289	2566	2842	3116	3479	3750	4198	4643	5083	5951		
1280	e [mm]	41	45	47	52	55	59	64	68				
	m [kg/m]	351	384	400	441	465	497	537	569				
	stainless steel F [kN]*	2968	3353	3545	4022	4306	4682	5149	5520				
	GRP F [kN]*	2434	2819	3011	3487	3770	4146	4612	4983				
1348	e [mm]	44	47	50	54	58	62	67	72				
	m [kg/m]	396	422	448	483	517	551	593	635				
	stainless steel F [kN]*	3467	3771	4074	4476	4875	5272	5764	6252				
	GRP F [kN]*	2825	3129	3432	3833	4232	4628	5120	5608				
1434	e [mm]	46	49	52	57	61	65	71	76				
	m [kg/m]	441	469	496	542	578	615	668	713				
	stainless steel F [kN]*	3890	4215	4537	5072	5497	5919	6548	7067				
	GRP F [kN]*	3150	3474	3796	4330	4755	5176	5804	6323				
1499	e [mm]	48	52	56	60	64	68	74	79				
	m [kg/m]	481	520	558	596	634	672	728	775				
	stainless steel F [kN]*	4236	4688	5137	5583	6027	6469	7126	7669				
	GRP F [kN]*	3476	3927	4376	4822	5265	5705	6361	6904				
1535	e [mm]	49	53	57	62	66	70	76	81				
	m [kg/m]	504	544	583	632	671	710	767	815				
	stainless steel F [kN]*	3925	4389	4850	5423	5878	6331	7005	7562				
	GRP F [kN]*	3664	4127	4587	5159	5614	6066	6739	7296				

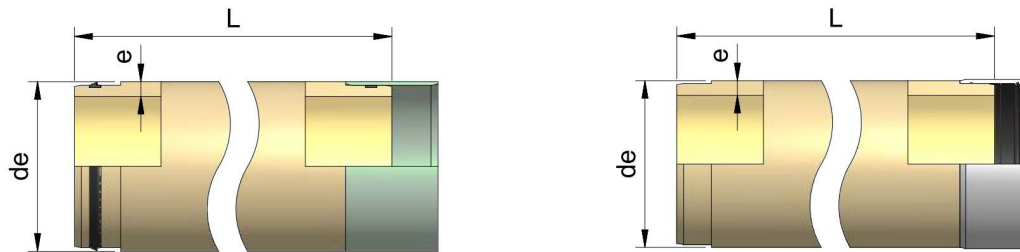
Wall thicknesses and pipe masses are minimum values or guidelines (plus tolerances).

\* The allowable jacking force (kN) corresponds to a safety factor of 3.5 times the ultimate force calculated. Project-related static calculations can result in differing allowable jacking forces.

All figures quoted are values and may vary slightly from the finished product due to manufacturing tolerances. The information and recommendations reflect the state of knowledge at the time of publication. They cannot therefore be construed as an express or implied warranty. The details must be checked and, if necessary, agreed in each individual case. Amiblu cannot accept any liability. This also applies to errors, omissions and changes to technical data without notice.



# Jacking Pipes OD 1638 - 2160



Jacking pipes with flush coupling (GRP or stainless steel), including allowable jacking forces. The standard pipe length is 6 m. Lengths of 1 / 2 / 3 m are available on request.

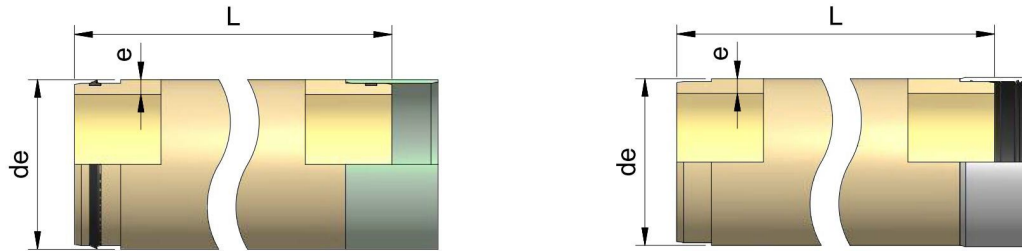
OD [mm]	Coupling	SN	SN	SN	SN	SN	SN	SN	SN	SN	SN	SN	SN
		32000	40000	50000	64000	80000	100000	128000	160000	200000	320000	640000	1000000
1638	e [mm]	52	56	60	65	70	75	81					
	m [kg/m]	569	611	653	706	757	809	870					
	stainless steel F [kN]*	4585	5079	5570	6180	6786	7388	8106					
	GRP F [kN]*	4218	4711	5202	5811	6417	7018	7734					
1720	e [mm]	55	59	64	68	73	78	84					
	m [kg/m]	632	676	731	775	830	884	948					
	stainless steel F [kN]*	5133	5651	6295	6807	7444	8077	8831					
	GRP F [kN]*	4381	4899	5542	6054	6690	7322	8075					
1842	e [mm]	59	63	68	73	78	83						
	m [kg/m]	726	774	833	892	950	1008						
	stainless steel F [kN]*	6074	6630	7320	8007	8689	9368						
	GRP F [kN]*	5224	5779	6469	7154	7836	8513						
1937	e [mm]	62	67	72	77	81	86						
	m [kg/m]	803	866	928	990	1039	1100						
	stainless steel F [kN]*	6824	7554	8281	9003	9578	10293						
	GRP F [kN]*	5325	6055	6781	7503	8078	8793						
2047	e [mm]	65	70	75	81	85							
	m [kg/m]	889	955	1021	1099	1151							
	stainless steel F [kN]*	7682	8453	9221	10136	10743							
	GRP F [kN]*	6549	7319	8086	9000	9606							
2160	e [mm]	69	74	79	85	90							
	m [kg/m]	995	1065	1134	1217	1285							
	stainless steel F [kN]*	8828	9641	10450	11416	12216							
	GRP F [kN]*	7185	8003	8808	9773	10573							

Wall thicknesses and pipe masses are minimum values or guidelines (plus tolerances).

\* The allowable jacking force (kN) corresponds to a safety factor of 3.5 times the ultimate force calculated. Project-related static calculations can result in differing allowable jacking forces.

All figures quoted are values and may vary slightly from the finished product due to manufacturing tolerances. The information and recommendations reflect the state of knowledge at the time of publication. They cannot therefore be construed as an express or implied warranty. The details must be checked and, if necessary, agreed in each individual case. Amiblu cannot accept any liability. This also applies to errors, omissions and changes to technical data without notice.

# Jacking Pipes OD 2250 - 3600



Jacking pipes with flush coupling (GRP or stainless steel), including allowable jacking forces. The standard pipe length is 6 m. Lengths of 1 / 2 / 3 m are available on request.

OD [mm]		SN	SN	SN	SN	SN	SN	SN	SN	SN	SN	SN	SN	
Coupling		32000	40000	50000	64000	80000	100000	128000	160000	200000	320000	640000	1000000	
2250	e [mm]	71	76	82	87	94								
	m [kg/m]	1068	1141	1227	1299	1399								
	stainless steel	F [kN]*	9512	10360	11373	12212	13381							
		GRP	F [kN]*	7987	8835	9846	10685	11852						
	2400	e [mm]	76	81	86	93	100							
		m [kg/m]	1218	1295	1372	1480	1586							
GRP		F [kN]*	9251	10154	11053	12304	13548							
2453	e [mm]	80	82	88	95	102								
	m [kg/m]	1312	1344	1438	1548	1657								
	GRP	F [kN]*	10127	10497	11602	12884	14157							
2555	e [mm]	82	85	92	99	106								
	m [kg/m]	1400	1450	1565	1679	1792								
	GRP	F [kN]*	10846	11423	12765	14099	15425							
3000	e [mm]	94	100	108	117	127								
	m [kg/m]	1887	2003	2157	2330	2520								
	GRP	F [kN]*	13068	14425	16226	18240	20462							

Wall thicknesses and pipe masses are minimum values or guidelines (plus tolerances).

\* The allowable jacking force (kN) corresponds to a safety factor of 3.5 times the ultimate force calculated. Project-related static calculations can result in differing allowable jacking forces.

All figures quoted are values and may vary slightly from the finished product due to manufacturing tolerances. The information and recommendations reflect the state of knowledge at the time of publication. They cannot therefore be construed as an express or implied warranty. The details must be checked and, if necessary, agreed in each individual case. Amiblu cannot accept any liability. This also applies to errors, omissions and changes to technical data without notice.

## Joists and Couplings

\* The degree of angular deflection depends on the pipe diameter. Please contact local representative for further information.



### GRP Sleeve (GR)

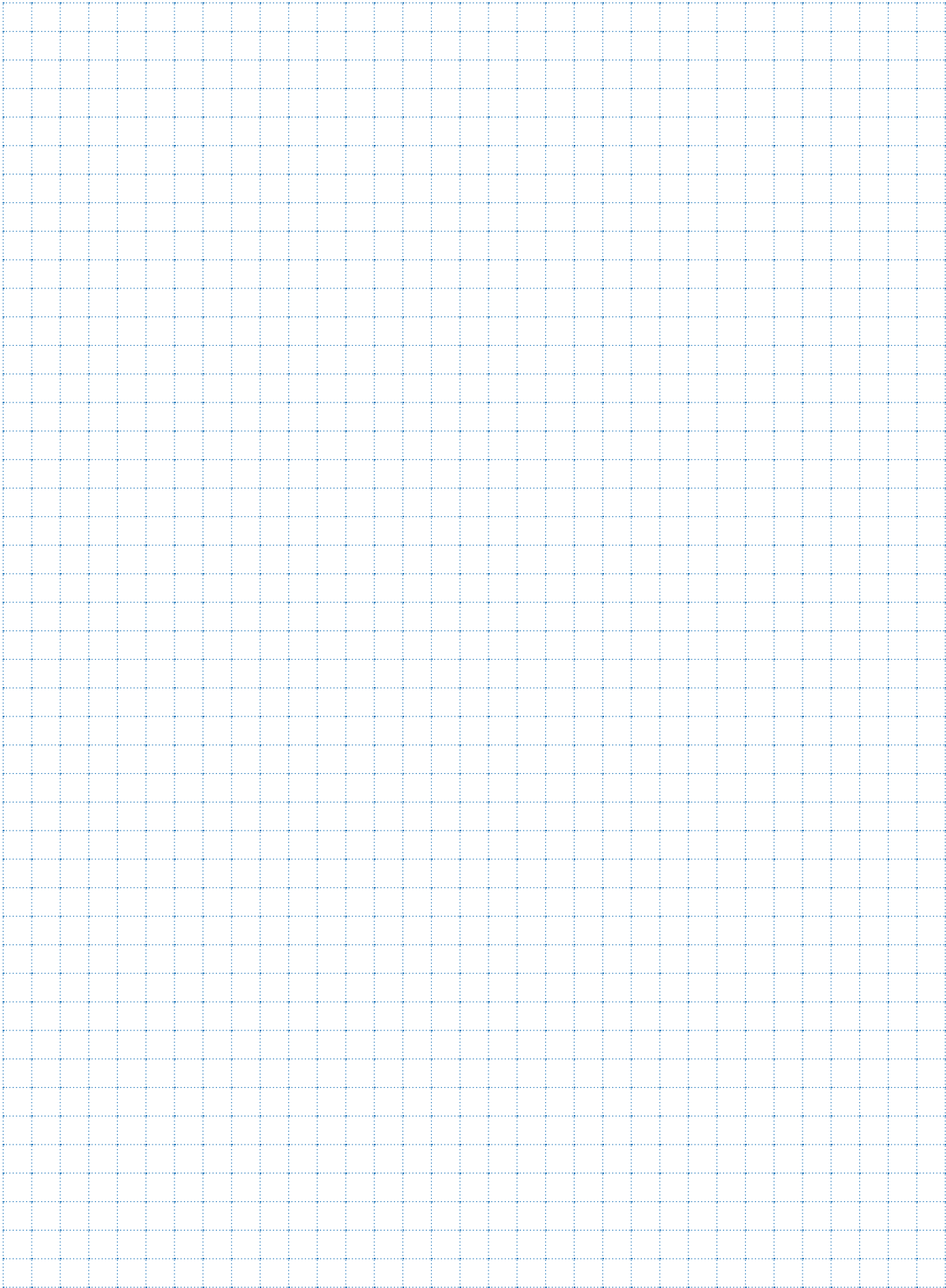
Diameter range (OD): 345 - 3000 mm



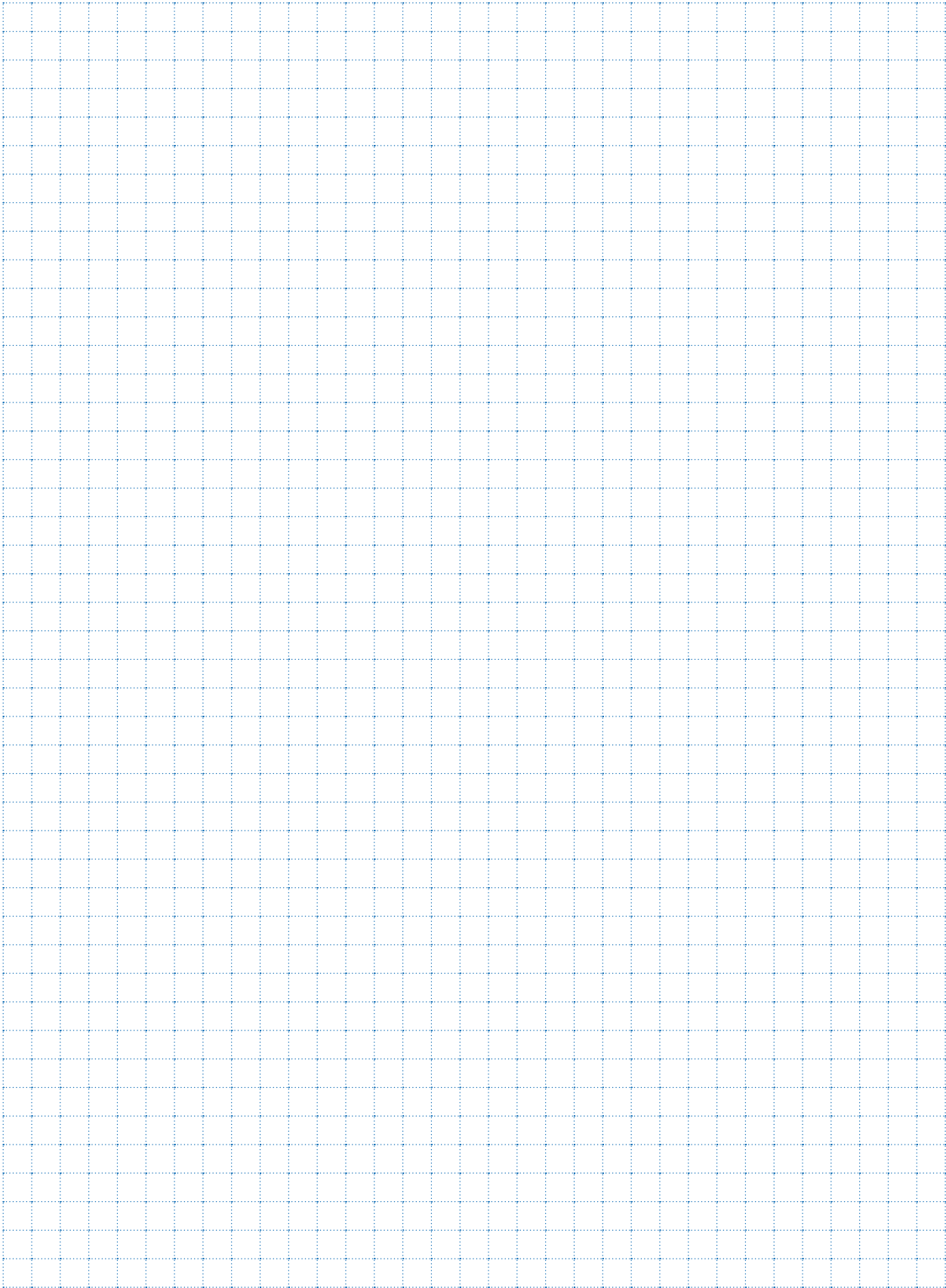
### Stainless Steel Sleeve With Integrated Rubber Seal (SE)

Diameter range (OD): 345 - 3000 mm

# Notes



# Notes



# Why there is nothing else like an Amiblu pipe system



Engineered for  
the next 150 years



Service-focused partners  
to solve your problems



Innovation to challenge  
the status quo



## Amiblu®

Explore more on [amiblu.com](http://amiblu.com) or contact your local partner for sustainable GRP pipe solutions.

All rights reserved. No part of this document may be reproduced in any form or by any means without prior written permission. All data, especially technical data, is subject to subsequent modifications. The given information is not binding and must therefore be checked and, if necessary, revised in each individual case. Amiblu and the companies affiliated with Amiblu are not liable for the advertising statements in this advertising brochure. In particular, Amiblu makes it clear that the advertising statements may not reflect the actual product characteristics and are for advertising purposes only, and therefore these statements do not form part of any contract for the purchase of the products advertised herein. © Amiblu Holding GmbH, Publication: 05/2020 | Rev. 1.3



Amiblu Pipe Systems  
Engineered for the next 150 years