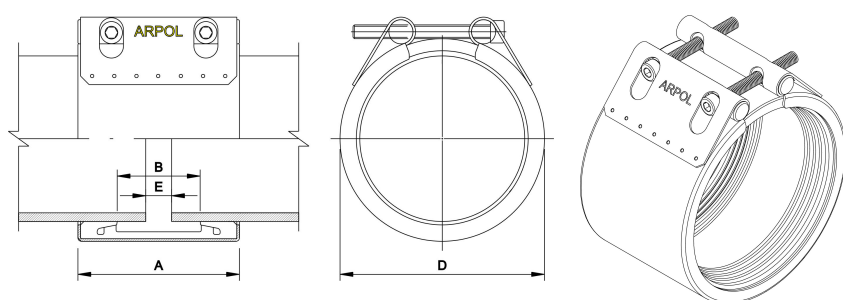


INSTAL

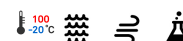
Datasheet

Friday, 29th of June 2018



Quality W4		
	AISI	DIN
Casing	304 L	1.4307
Bars	304 L	1.4307
Bolts	304	1.4301

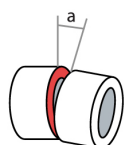
Rubber gasket
EPDM
Suitable for water, air and some chemical products



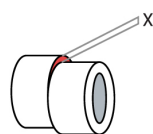
Range	Item	PS	Fac	Lock			Dimensions				Weight	Tolerances		
				Num	Diam	Tor	A	B	D	E		α	\odot	$\Delta\emptyset$
mm		bar				Nm					kg	°	mm	mm
1431 - 1441	IEZ 1431-1441 A2E6	6		1	M16	120	202	142	0	15	34.7	2	3	3

PS: Working pressure **Num:** Number of locks **Diam:** Bolt diameter **Tor:** Torque rate **Fac:** Factor test pressure: Factor x PS

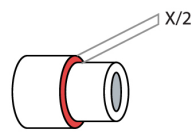
α Maximum angular deflection



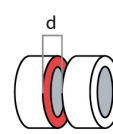
\odot Maximum misalignment



$\Delta\emptyset$ Maximum diameter difference



Dim E: Maximum gap width



Remarks:

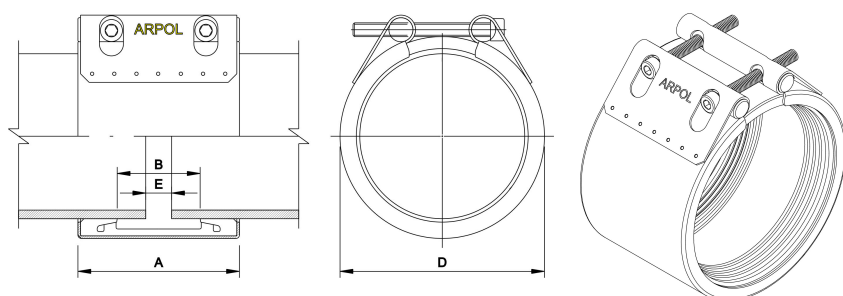
- For the correct operation of the coupling, fitting instructions must be respected. [INSTAL](#)
- Inner steel band may be required for special applications (e.g. Risk of negative pressure)

Except errors / Subject to change without prior notice

INSTAL

Datasheet

Friday, 29th of June 2018



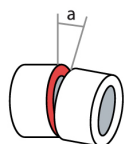
	Quality W5	
	AISI	DIN
Casing	316 L	1.4404
Bars	316 L	1.4404
Bolts	316	1.4401
Rubber gasket	EPDM	
	Suitable for water, air and some chemical products	



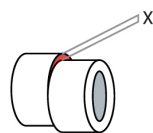
Range	Item	PS	Fac	Lock			Dimensions				Weight	Tolerances		
				Num	Diam	Tor	A	B	D	E		α	\odot	$\Delta\emptyset$
mm		bar				Nm	mm				kg	$^\circ$	mm	mm
343 - 349	IBZ 343-349 A4E12	12	1.5	1	M12	30	199	142	372	15	7.1	2	3	2.5
343 - 349	ICZ 343-349 A4E16	16	1.5	1	M12	30	200	142	373	15	8.2	2	3	2.5
424 - 430	ICZ 424-430 A4E13	13	1.5	1	M12	30	200	142	454	15	9.6	2	3	2.5
424 - 430	IDZ 424-430 A4E16	16	1.5	1	M12	30	201	142	455	15	10.9	2	3	2.5
426 - 432	IBZ 426-432 A4E9	9		1	M12	40	199	142	455	15	8.1	2	3	2.5
504 - 512	IBZ 504-512 A4E8	8	1.5	1	M12	35	199	142	535	15	9.3	2	3	3
504 - 512	ICZ 504-512 A4E10	10	1.5	1	M12	35	200	142	536	15	10.8	2	3	3
504 - 512	IFZ 504-512 A4E20	20	1.5	1	M16	45	204	142	540	15	18.7	2	3	3

PS: Working pressure **Num:** Number of locks **Diam:** Bolt diameter **Tor:** Torque rate **Fac:** Factor test pressure: Factor x PS

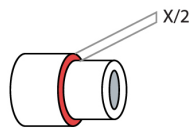
α Maximum angular deflection



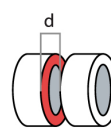
\odot Maximum misalignment



$\Delta\emptyset$ Maximum diameter difference



Dim E: Maximum gap width



Remarks:

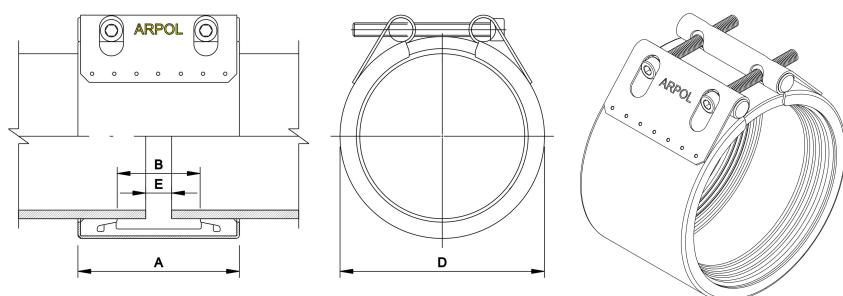
- For the correct operation of the coupling, fitting instructions must be respected. [INSTAL](#)
- Inner steel band may be required for special applications (e.g. Risk of negative pressure)

Except errors / Subject to change without prior notice

INSTAL

Datasheet

Friday, 29th of June 2018



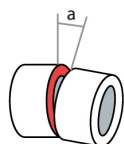
	Quality W5	
	AISI	DIN
Casing	316 L	1.4404
Bars	316 L	1.4404
Bolts	316	1.4401
Rubber gasket		
EPDM		
Suitable for water, air and some chemical products		



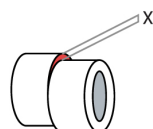
Range	Item	PS	Fac	Lock			Dimensions				Weight	Tolerances		
				Num	Diam	Tor	A	B	D	E		α	\odot	$\Delta\emptyset$
mm		bar				Nm	mm				kg	$^\circ$	mm	mm
585 - 593	IBZ 585-593 A4E7	7	1.5	1	M12	35	199	142	616	15	10.3	2	3	3
585 - 593	IDZ 585-593 A4E12	12	1.5	1	M12	35	201	142	618	15	13.9	2	3	3
585 - 593	IFZ 585-593 A4E19	19	1.5	1	M16	50	204	142	621	15	20.8	2	3	3
665 - 673	IBZ 665-673 A4E6	6	1.5	1	M12	45	199	142	696	15	11.3	2	3	3
665 - 673	IEZ 665-673 A4E12	12	1.5	1	M16	60	202	142	699	15	18.6	2	3	3
665 - 673	IFZ 665-673 A4E16	16	1.5	1	M16	60	204	142	701	15	23	2	3	3
745 - 753	IBZ 745-753 A4E6	6	1.5	1	M12	45	199	142	776	15	12.4	2	3	3
745 - 753	IEZ 745-753 A4E11	11	1.5	1	M16	60	202	142	779	15	20.3	2	3	3

PS: Working pressure **Num:** Number of locks **Diam:** Bolt diameter **Tor:** Torque rate **Fac:** Factor test pressure: Factor x PS

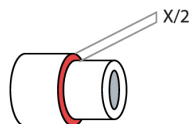
α Maximum angular deflection



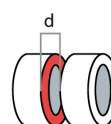
\odot Maximum misalignment



$\Delta\emptyset$ Maximum diameter difference



Dim E: Maximum gap width



Remarks:

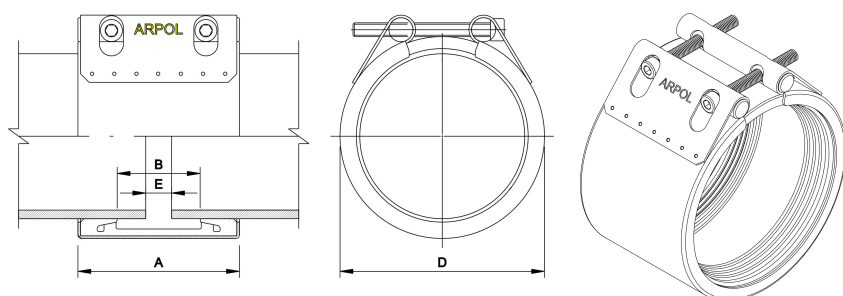
- For the correct operation of the coupling, fitting instructions must be respected. [INSTAL](#)
- Inner steel band may be required for special applications (e.g. Risk of negative pressure)

Except errors / Subject to change without prior notice

INSTAL

Datasheet

Friday, 29th of June 2018



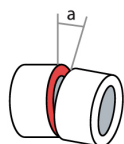
	Quality W5	
	AISI	DIN
Casing	316 L	1.4404
Bars	316 L	1.4404
Bolts	316	1.4401
Rubber gasket		
EPDM		
Suitable for water, air and some chemical products		



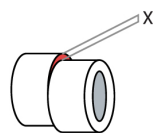
Range	Item	PS	Fac	Lock			Dimensions				Weight	Tolerances		
				Num	Diam	Tor	A	B	D	E		α	\odot	$\Delta\emptyset$
mm		bar				Nm	mm				kg	$^\circ$	mm	mm
745 - 753	IGZ 745-753 A4E18	18	1.5	1	M20	80	206	142	783	15	32	2	3	3
824 - 832	IBZ 824-832 A4E5	5	1.5	1	M12	50	199	142	855	15	13.4	2	3	3
824 - 832	ICZ 824-832 A4E6	6	1.5	1	M12	50	200	142	856	15	17	2	3	3
824 - 832	IEZ 824-832 A4E10	10	1.5	1	M16	70	202	142	858	15	22	2	3	3
824 - 832	IGZ 824-832 A4E16	16	1.5	1	M20	90	206	142	862	15	34.6	2	3	3
921 - 929	ICZ 921-929 A4E6	6		1	M12	60	200	142	953	15	18.6	2	3	3
921 - 929	IFZ 921-929 A4E12	12	1.5	1	M16	80	204	142	957	15	29.7	2	3	3
924	IHFZ 924A4E18	18	1.5	1	M20	100	204	142	976	15	53.5	1	2	2

PS: Working pressure **Num:** Number of locks **Diam:** Bolt diameter **Tor:** Torque rate **Fac:** Factor test pressure: Factor x PS

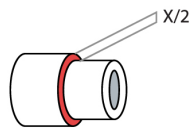
α Maximum angular deflection



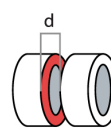
\odot Maximum misalignment



$\Delta\emptyset$ Maximum diameter difference



Dim E: Maximum gap width



Remarks:

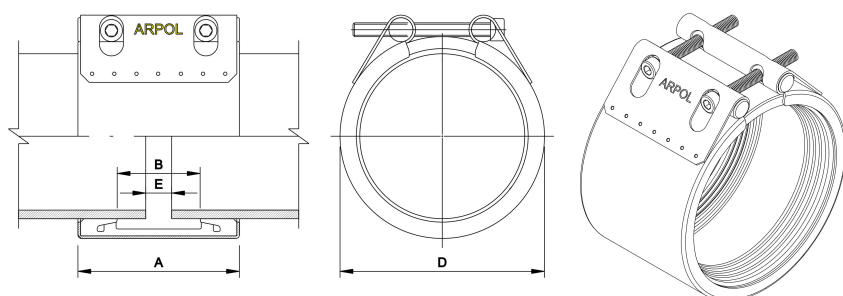
- For the correct operation of the coupling, fitting instructions must be respected. [INSTAL](#)
- Inner steel band may be required for special applications (e.g. Risk of negative pressure)

Except errors / Subject to change without prior notice

INSTAL

Datasheet

Friday, 29th of June 2018



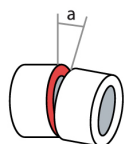
	Quality W5	
	AISI	DIN
Casing	316 L	1.4404
Bars	316 L	1.4404
Bolts	316	1.4401
Rubber gasket	EPDM	
	Suitable for water, air and some chemical products	



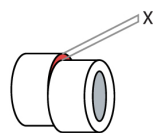
Range	Item	PS	Fac	Lock			Dimensions				Weight	Tolerances		
				Num	Diam	Tor	A	B	D	E		α	\odot	$\Delta\emptyset$
mm		bar				Nm	mm				kg	$^\circ$	mm	mm
1023 - 1033	ICZ 1023-1033 A4E5	5		1	M12	70	200	142	1057	15	20.1	2	3	3
1023 - 1033	IEZ 1023-1033 A4E8	8	1.5	1	M16	90	202	142	1059	15	26.1	2	3	3
1023 - 1033	IFZ 1023-1033 A4E10	10	1.5	1	M16	90	204	142	1061	15	32.4	2	3	3
1026	IHFZ 1026A4E16	16	1.5	1	M20	120	204	142	1078	15	58.4	1	2	2
1226 - 1236	ICZ 1226-1236 A4E4	4		1	M16	100	200	142	1260	15	23.7	2	3	3
1226 - 1236	IEZ 1226-1236 A4E7	7		1	M16	100	202	142	0	15	30.4	2	3	3
1226 - 1236	IGZ 1226-1236 A4E11	11	1.5	1	M20	140	206	142	1266	15	47.5	2	3	3
1431 - 1441	IEZ 1431-1441 A4E6	6		1	M16	120	202	142	0	15	34.7	2	3	3

PS: Working pressure **Num:** Number of locks **Diam:** Bolt diameter **Tor:** Torque rate **Fac:** Factor test pressure: Factor x PS

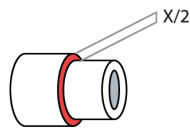
α Maximum angular deflection



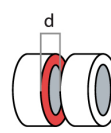
\odot Maximum misalignment



$\Delta\emptyset$ Maximum diameter difference



Dim E: Maximum gap width



Remarks:

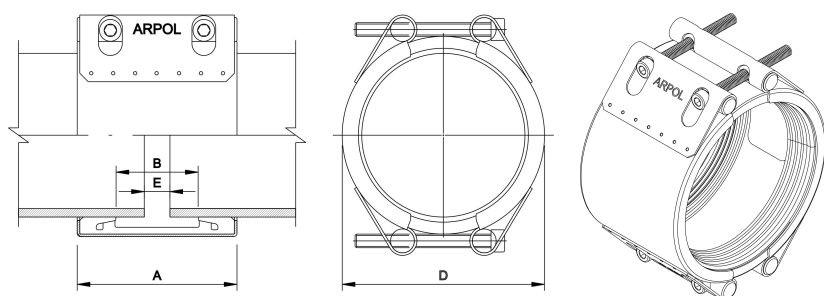
- For the correct operation of the coupling, fitting instructions must be respected. [INSTAL](#)
- Inner steel band may be required for special applications (e.g. Risk of negative pressure)

Except errors / Subject to change without prior notice

INSTAL

Datasheet

Friday, 29th of June 2018



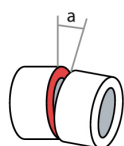
	Quality W5	
	AISI	DIN
Casing	316 L	1.4404
Bars	316 L	1.4404
Bolts	316	1.4401
Rubber gasket		
EPDM		
Suitable for water, air and some chemical products		



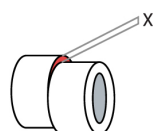
Range	Item	PS	Fac	Lock			Dimensions				Weight	Tolerances		
				Num	Diam	Tor	A	B	D	E		α	\odot	$\Delta\emptyset$
mm		bar				Nm	mm				kg	$^\circ$	mm	mm
1229	IHFZ-2 1229A4E14	14	1.5	2	M20	140	204	142	1281	15	76.3	1	2	3
1434	IHFZ-2 1434A4E12	12	1.5	2	M20	160	204	142	1486	15	86.1	1	2	3
1636 - 1646	IEZ-2 1636-1646 A4E5	5	1.5	2	M16	140	202	142	1672	15	43.2	1	3	6
1636 - 1646	IFZ-2 1636-1646 A4E7	7	1.5	2	M20	180	204	142	1674	15	55.8	1	3	6
1638	IHFZ-2 1638A4E10	10	1.5	2	M20	180	204	142	1690	15	95.9	1	2	3
1840 - 1850	IEZ-2 1840-1850 A4E4	4	1.5	2	M16	160	202	142	1876	15	47.5	1	3	6
1840 - 1850	IFZ-2 1840-1850 A4E6	6		2	M20	200	204	142	1878	15	61.2	1	3	6
1842	IHFZ-2 1842A4E9	9	1.5	2	M20	200	204	142	1894	15	105.7	1	2	3

PS: Working pressure **Num:** Number of locks **Diam:** Bolt diameter **Tor:** Torque rate **Fac:** Factor test pressure: Factor x PS

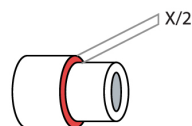
α Maximum angular deflection



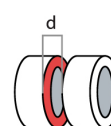
\odot Maximum misalignment



$\Delta\emptyset$ Maximum diameter difference



Dim E: Maximum gap width



Remarks:

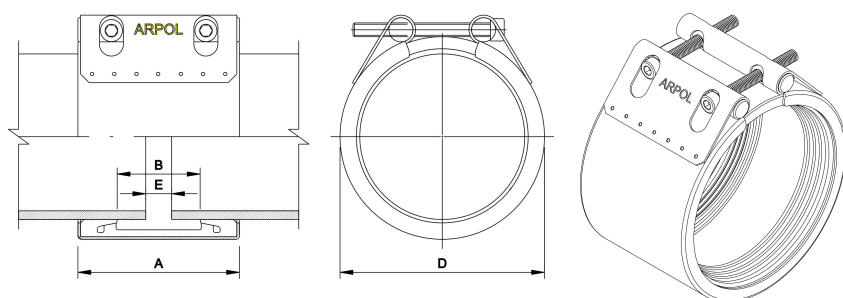
- For the correct operation of the coupling, fitting instructions must be respected. [INSTAL](#)
- Inner steel band may be required for special applications (e.g. Risk of negative pressure)

Except errors / Subject to change without prior notice

INSTAL

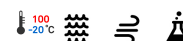
Datasheet

Friday, 29th of
June 2018



	Quality W5	
	AISI	DIN
Casing	316 L	1.4404
Bars	316 L	1.4404
Bolts	316	1.4401

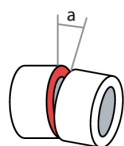
Rubber gasket
EPDM
Suitable for water, air and some chemical products



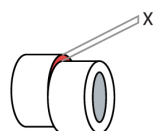
Range	Item	PS	Fac	Lock			Dimensions				Weight	Tolerances		
				Num	Diam	Tor	A	B	D	E		α	\bigcirc	$\Delta\emptyset$
mm		bar				Nm					kg	$^\circ$	mm	mm
270 - 276	IBZ 270-276 A4E15	15	1.5	1	M12	25	199	142	299	15	6.1	2	3	2.5
323 - 329	IBZ 323-329 A4E12	12	1.5	1	M12	30	199	142	352	15	6.8	2	3	2.5
375 - 381	IBZ 375-381 A4E11	11		1	M12	35	199	142	404	15	7.5	2	3	2.5
426 - 432	IBZ 426-432 A4E9	9		1	M12	40	199	142	455	15	8.1	2	3	2.5
477 - 483	IBZ 477-483 A4E8	8	1.5	1	M12	45	199	142	506	15	8.8	2	3	2.5
525 - 533	IBZ 525-533 A4E8	8		1	M12	35	199	142	556	15	9.5	2	3	3
548 - 556	IBZ 548-556 A4E8	8	1.5	1	M12	35	199	142	579	15	9.8	2	3	3
614 - 622	IBZ 614-622 A4E6	6	1.5	1	M12	40	199	142	645	15	10.7	2	3	3

PS: Working pressure **Num:** Number of locks **Diam:** Bolt diameter **Tor:** Torque rate **Fac:** Factor test pressure: Factor x PS

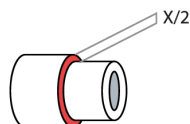
α Maximum angular deflection



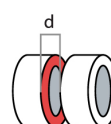
\bigcirc Maximum misalignment



$\Delta\emptyset$ Maximum diameter difference



Dim E: Maximum gap width



Remarks:

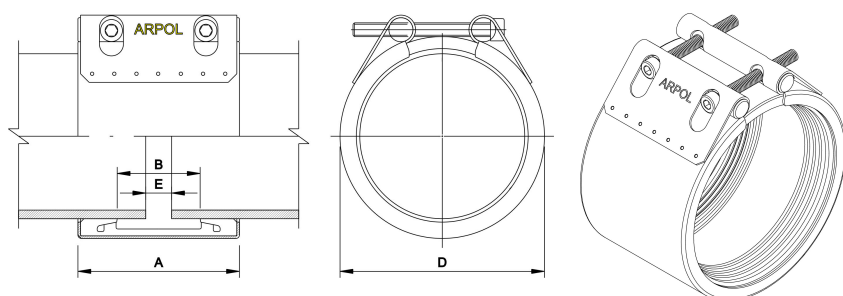
- For the correct operation of the coupling, fitting instructions must be respected. [INSTAL](#)
- Inner steel band may be required for special applications (e.g. Risk of negative pressure)

Except errors / Subject to change without prior notice

INSTAL

Datasheet

Friday, 29th of June 2018



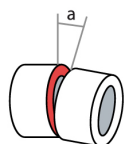
	Quality W5	
	AISI	DIN
Casing	316 L	1.4404
Bars	316 L	1.4404
Bolts	316	1.4401
Rubber gasket		
EPDM		
Suitable for water, air and some chemical products		



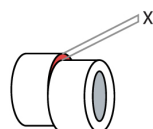
Range	Item	PS	Fac	Lock			Dimensions				Weight	Tolerances		
				Num	Diam	Tor	A	B	D	E		α	\odot	$\Delta\emptyset$
mm		bar				Nm	mm				kg	$^\circ$	mm	mm
648 - 656	IBZ 648-656 A4E6	6	1.5	1	M12	40	199	142	679	15	11.1	2	3	3
716 - 724	IBZ 716-724 A4E6	6		1	M12	45	199	142	747	15	12	2	3	3
750 - 758	IBZ 750-758 A4E5	5	1.5	1	M12	50	199	142	781	15	12.4	2	3	3
818 - 826	IBZ 818-826 A4E5	5		1	M12	50	199	142	849	15	13.3	2	3	3
858 - 866	ICZ 858-866 A4E6	6	1.5	1	M12	60	200	142	890	15	17.6	2	3	3
921 - 929	ICZ 921-929 A4E6	6		1	M12	60	200	142	953	15	18.6	2	3	3
958 - 966	ICZ 958-966 A4E5	5	1.5	1	M12	60	200	142	990	15	19.1	2	3	3
1023 - 1033	ICZ 1023-1033 A4E5	5		1	M12	70	200	142	1057	15	20.1	2	3	3

PS: Working pressure **Num:** Number of locks **Diam:** Bolt diameter **Tor:** Torque rate **Fac:** Factor test pressure: Factor x PS

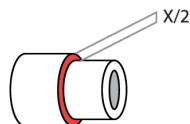
α Maximum angular deflection



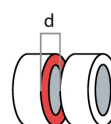
\odot Maximum misalignment



$\Delta\emptyset$ Maximum diameter difference



Dim E: Maximum gap width



Remarks:

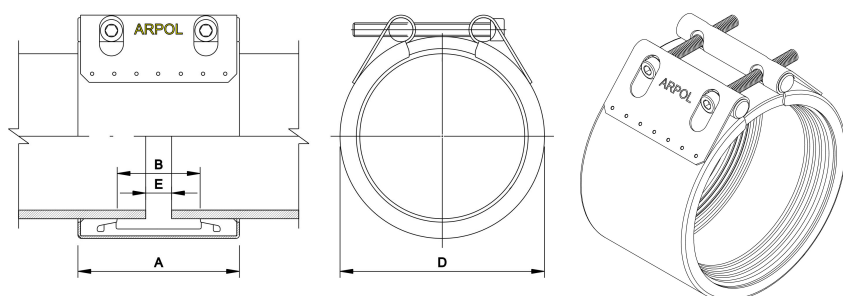
- For the correct operation of the coupling, fitting instructions must be respected. [INSTAL](#)
- Inner steel band may be required for special applications (e.g. Risk of negative pressure)

Except errors / Subject to change without prior notice

INSTAL

Datasheet

Friday, 29th of June 2018



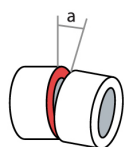
	Quality W5	
	AISI	DIN
Casing	316 L	1.4404
Bars	316 L	1.4404
Bolts	316	1.4401
Rubber gasket		
EPDM		
Suitable for water, air and some chemical products		



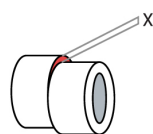
Range	Item	PS	Fac	Lock			Dimensions				Weight	Tolerances		
				Num	Diam	Tor	A	B	D	E		α	\odot	$\Delta\emptyset$
mm		bar				Nm	mm				kg	$^\circ$	mm	mm
1097 - 1107	ICZ 1097-1107 A4E5	5		1	M16	90	200	142	1131	15	21.7	2	3	3
1226 - 1236	ICZ 1226-1236 A4E4	4		1	M16	100	200	142	1260	15	23.7	2	3	3
1497 - 1507	ICZ 1497-1507 A4E4	4		1	M16	120	200	142	1531	15	27.9	2	3	3

PS: Working pressure **Num:** Number of locks **Diam:** Bolt diameter **Tor:** Torque rate **Fac:** Factor test pressure: Factor x PS

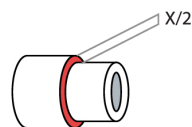
α Maximum angular deflection



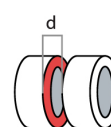
\odot Maximum misalignment



$\Delta\emptyset$ Maximum diameter difference



Dim E: Maximum gap width



Remarks:

- For the correct operation of the coupling, fitting instructions must be respected. [INSTAL](#)
- Inner steel band may be required for special applications (e.g. Risk of negative pressure)

Except errors / Subject to change without prior notice